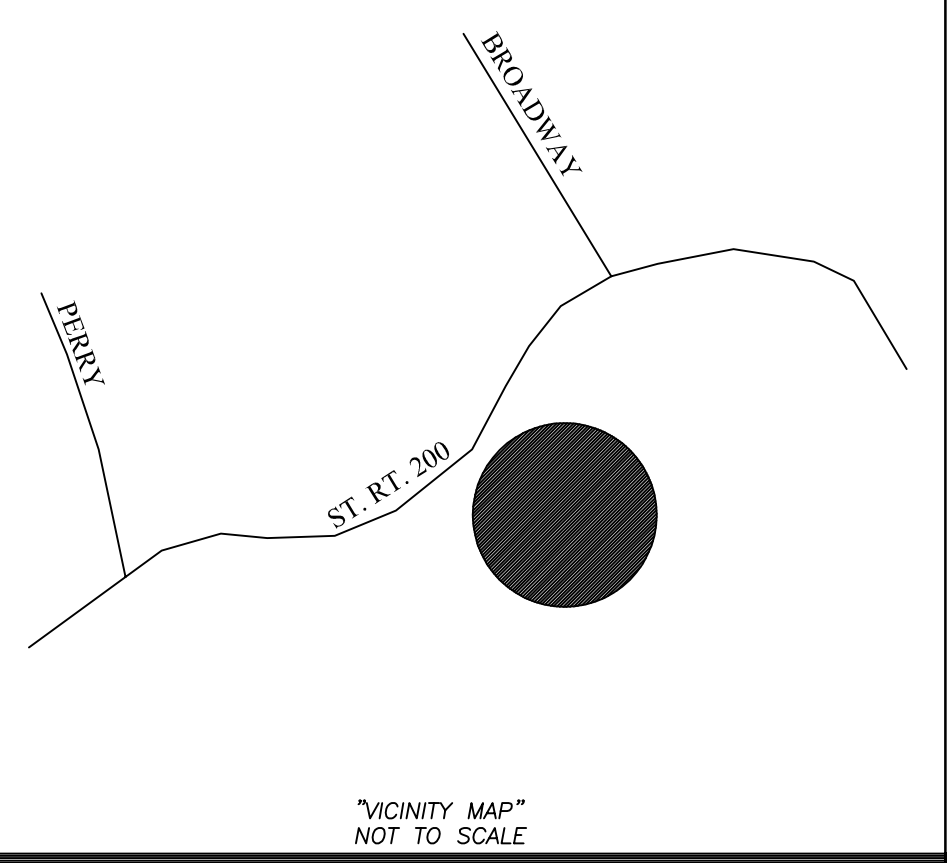
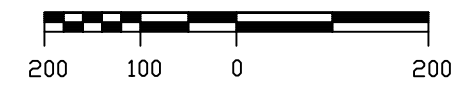
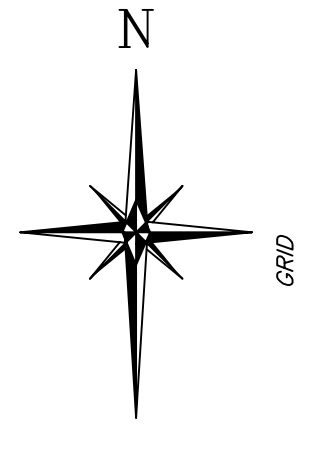
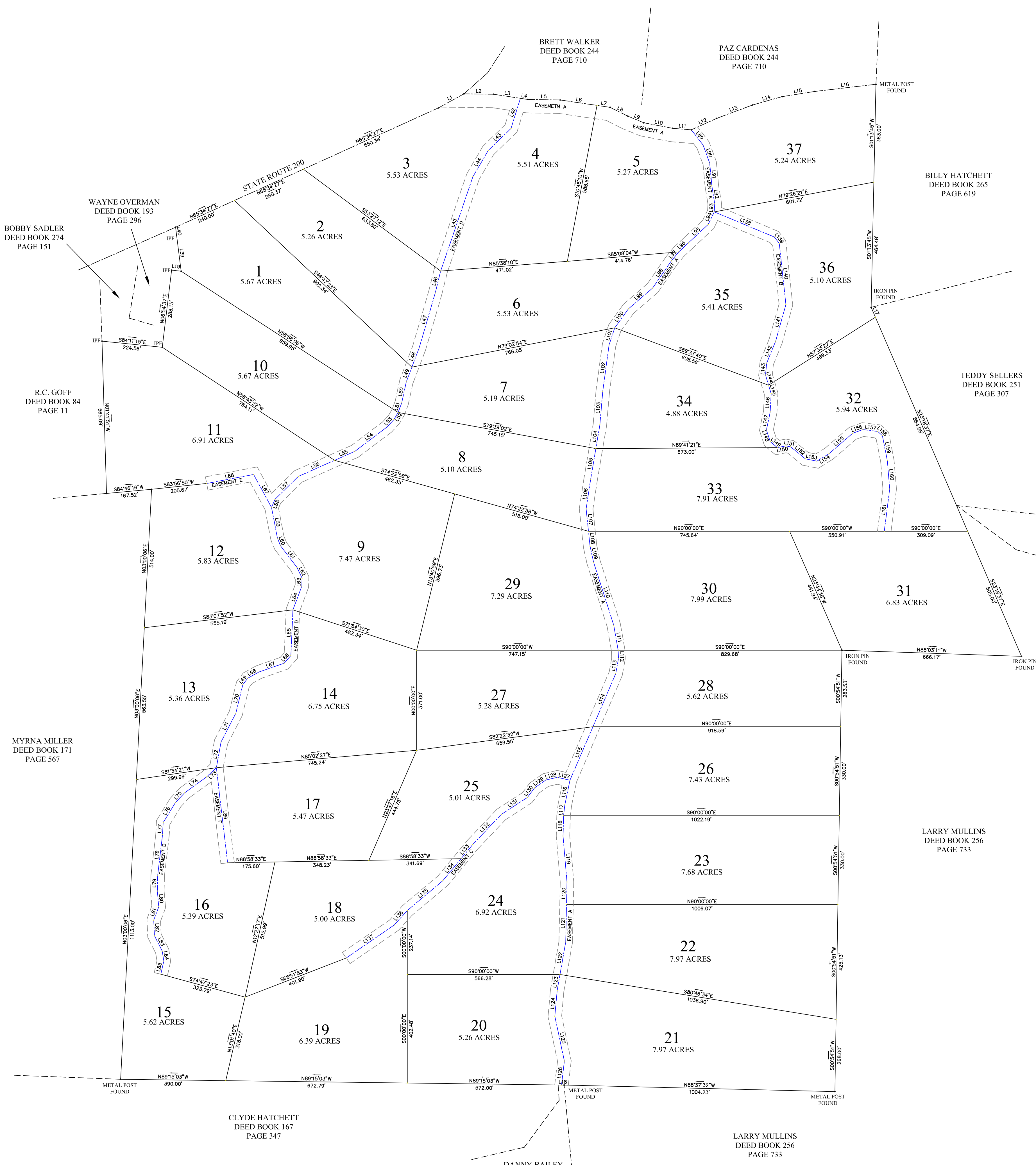


# TWIN RIVERS



LINE	LENGTH	BEARING	L40	L41	L42	L43	L44	L45	L46	L47	L48	L49	L50	L51	L52	L53	L54	L55	L56	L57	L58	L59	L60	L61	L62	L63	L64	L65	L66	L67	L68	L69	L70	L71	L72	L73	L74	L75	L76	L77	L78	L79	L80	L81	L82	L83	L84	L85	L86	L87	L88	L89	L90	L91	L92	L93	L94	L95	L96	L97	L98	L99	L100	L101	L102	L103	L104	L105	L106	L107	L108	L109	L110	L111	L112	L113	L114	L115	L116	L117	L118	L119	L120	L121	L122	L123	L124	L125	L126	L127	L128	L129	L130	L131	L132	L133	L134	L135	L136	L137	L138	L139	L140	L141	L142	L143	L144	L145	L146	L147	L148	L149	L150	L151	L152	L153	L154	L155	L156	L157	L158	L159	L160	L161	L162	L163	L164	L165	L166	L167	L168	L169	L170	L171	L172	L173	L174	L175	L176	L177	L178	L179	L180	L181	L182	L183	L184	L185	L186	L187	L188	L189	L190	L191	L192	L193	L194	L195	L196	L197	L198	L199	L200																																																																																																																																																																																																																																																																																								
L1	107.53	N61°13'12"E	L42	116.86	S17°14'14"W	L63	29.85	S01°50'55"W	L84	37.27	S08°50'54"E	L105	116.44	S09°36'31"W	L126	89.47	S06°45'55"W	L147	68.46	S11°47'06"W	L67	37.79	S41°50'33"W	L87	139.36	N28°28'45"W	L108	55.87	S05°59'12"E	L129	50.93	S50°08'55"W	L150	32.43	N79°09'32"E	L70	109.64	S13°49'04"W	L91	83.36	S05°19'22"E	L112	38.42	S02°08'13"E	L133	68.63	S39°33'45"W	L154	32.41	N49°16'32"E	L71	119.22	S27°15'16"W	L92	68.10	S09°07'11"E	L113	57.52	S10°12'34"W	L134	106.02	S39°33'45"W	L155	115.66	N49°16'34"E	L72	97.00	S10°22'55"W	L93	30.03	S03°14'35"W	L114	213.82	S23°14'23"W	L135	172.06	S00°02'20"W	L156	40.66	N69°57'16"E	L73	50.07	S46°43'55"W	L94	52.00	S25°49'58"W	L115	215.95	S23°14'23"W	L136	72.47	S41°55'52"W	L157	55.05	S82°50'29"E	L74	100.47	S53°58'50"W	L95	100.67	S46°58'48"W	L116	93.14	S11°44'09"W	L137	215.70	S55°29'50"W	L158	23.61	S47°40'47"E	L75	49.07	S43°20'34"W	L96	48.00	S46°56'36"W	L117	40.61	S06°40'22"W	L138	241.13	S67°17'29"E	L159	94.88	S11°06'18"E	L76	87.42	S31°32'51"W	L97	43.60	S39°35'26"W	L118	75.53	S01°33'54"W	L139	30.08	S37°51'19"E	L160	104.58	S04°42'46"E	L77	45.32	S03°09'54"W	L98	122.37	S34°34'35"W	L119	171.08	S04°56'51"E	L140	228.21	S06°12'11"E	L161	157.95	S07°17'51"W	L78	151.74	S06°45'20"W	L99	118.30	S49°02'09"W	L120	84.04	S01°15'07"W	L141	141.04	S15°40'49"W	L79	57.86	S01°19'05"W	L100	86.70	S35°43'59"W	L121	138.63	S01°15'07"W	L142	87.95	S22°08'21"W	L80	58.71	S05°02'19"E	L101	66.83	S18°22'39"W	L122	122.12	S09°59'04"W	L143	43.95	S05°48'30"E	L81	52.85	S20°27'07"W	L102	173.12	S07°45'54"W	L123	61.07	S09°59'04"W	L144	39.62	S16°45'57"E	L82	64.38	S26°41'31"E	L103	124.86	S04°53'17"W	L124	95.13	S05°09'15"W	L145	32.94	S16°45'57"E	L83	64.38	S26°41'31"E	L104	89.40	S09°36'31"W	L125	169.94	S12°00'09"E	L146	67.79	S02°51'29"W	L84	37.27	S08°50'54"E	L105	116.44	S09°36'31"W	L126	89.47	S06°45'55"W	L147	68.46	S11°47'06"W	L85	49.85	S12°37'16"W	L106	109.94	S08°42'59"W	L127	48.20	N77°17'06"W	L148	45.49	S18°09'34"E	L86	355.40	S06°44'05"E	L107	83.77	S05°59'12"E	L128	43.57	S76°48'05"W	L149	34.27	S50°22'38"E	L87	139.36	N28°28'45"W	L108	55.87	S05°59'12"E	L129	50.93	S50°08'55"W	L150	32.43	N79°09'32"E	L88	177.14	S79°06'05"W	L109	60.42	S12°28'28"E	L130	44.71	S36°45'28"W	L151	18.38	S78°11'18"E	L89	71.32	S37°38'36"E	L110	245.21	S17°46'34"E	L131	115.25	S57°04'03"W	L152	69.57	S50°28'10"E	L90	71.24	S20°14'11"E	L111	94.50	S09°54'42"E	L132	153.23	S43°29'42"W	L153	43.97	S79°08'25"E	L91	83.36	S05°19'22"E	L112	38.42	S02°08'13"E	L133	68.63	S39°33'45"W	L154	32.41	N49°16'32"E	L92	68.10	S09°07'11"E	L113	57.52	S10°12'34"W	L134	106.02	S39°33'45"W	L155	115.66	N49°16'34"E	L93	30.03	S03°14'35"W	L114	213.82	S23°14'23"W	L135	172.06	S00°02'20"W	L156	40.66	N69°57'16"E	L94	52.00	S25°49'58"W	L115	215.95	S23°14'23"W	L136	72.47	S41°55'52"W	L157	55.05	S82°50'29"E	L95	100.67	S46°58'48"W	L116	93.14	S11°44'09"W	L137	215.70	S55°29'50"W	L158	23.61	S47°40'47"E	L96	48.00	S46°56'36"W	L117	40.61	S06°40'22"W	L138	241.13	S67°17'29"E	L159	94.88	S11°06'18"E	L97	43.60	S39°35'26"W	L118	75.53	S01°33'54"W	L139	30.08	S37°51'19"E	L160	104.58	S04°42'46"E	L98	122.37	S34°34'35"W	L119	171.08	S04°56'51"E	L140	228.21	S06°12'11"E	L161	157.95	S07°17'51"W	L99	118.30	S49°02'09"W	L120	84.04	S01°15'07"W	L141	141.04	S15°40'49"W	L100	86.70	S35°43'59"W	L121	138.63	S01°15'07"W	L142	87.95	S22°08'21"W	L101	66.83	S18°22'39"W	L122	122.12	S09°59'04"W	L143	43.95	S05°48'30"E	L102	173.12	S07°45'54"W	L123	61.07	S09°59'04"W	L144	39.62	S16°45'57"E



GLOBAL POSITIONING SYSTEM NOTES:  
 1. For boundary and topographic (if applicable) aspects of this survey, RTK GPS positional data was observed on the dates of 9-2-2020.  
 2. TOPCON HIPER V DUAL FREQUENCY RECEIVERS WERE USED.  
 3. Datum/Epoch: NAD83(2011) Epoch 2010.00  
 4. Published/Fixed Control Used: NONE  
 5. Geoid Model: Geoid12A  
 6. Combined Scale Factor: 0.99994521  
 7. Positional accuracy of the GPS vectors does not exceed:  
 Horizontal 0.06' - Vertical 0.08'

IRON PIN SET AT ALL PROPERTY CORNERS WITH 1/2 INCH REBAR STAMPED "ADVANCED LAND SURV" ORANGE PLASTIC CAP UNLESS OTHERWISE NOTED.

## Advanced Land Surveying, Inc.

2000 Wilson School road (P.O. Box 214) Henderson, Tennessee 38340 731-983-0509

I hereby certify that this survey was done in compliance with the current Tennessee Minimum Standards of Practice. That it is a category II survey and the ratio of precision of the unadjusted survey is 1:7500 as shown hereon.

DRAWN BY: M.MANESS	SCALE: 1"=200'
DATE: 2-11-21	TAX MAP ID: 93-27.00
FILENAME: 39-93-27	DISTRICT: FIFTH
DRAWING # 043.27	COUNTY: HENDERSON

**SAGMD LLC PROPERTY**  
 DEED BOOK 287, PAGE 548