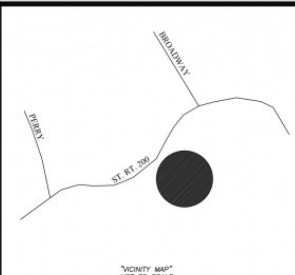
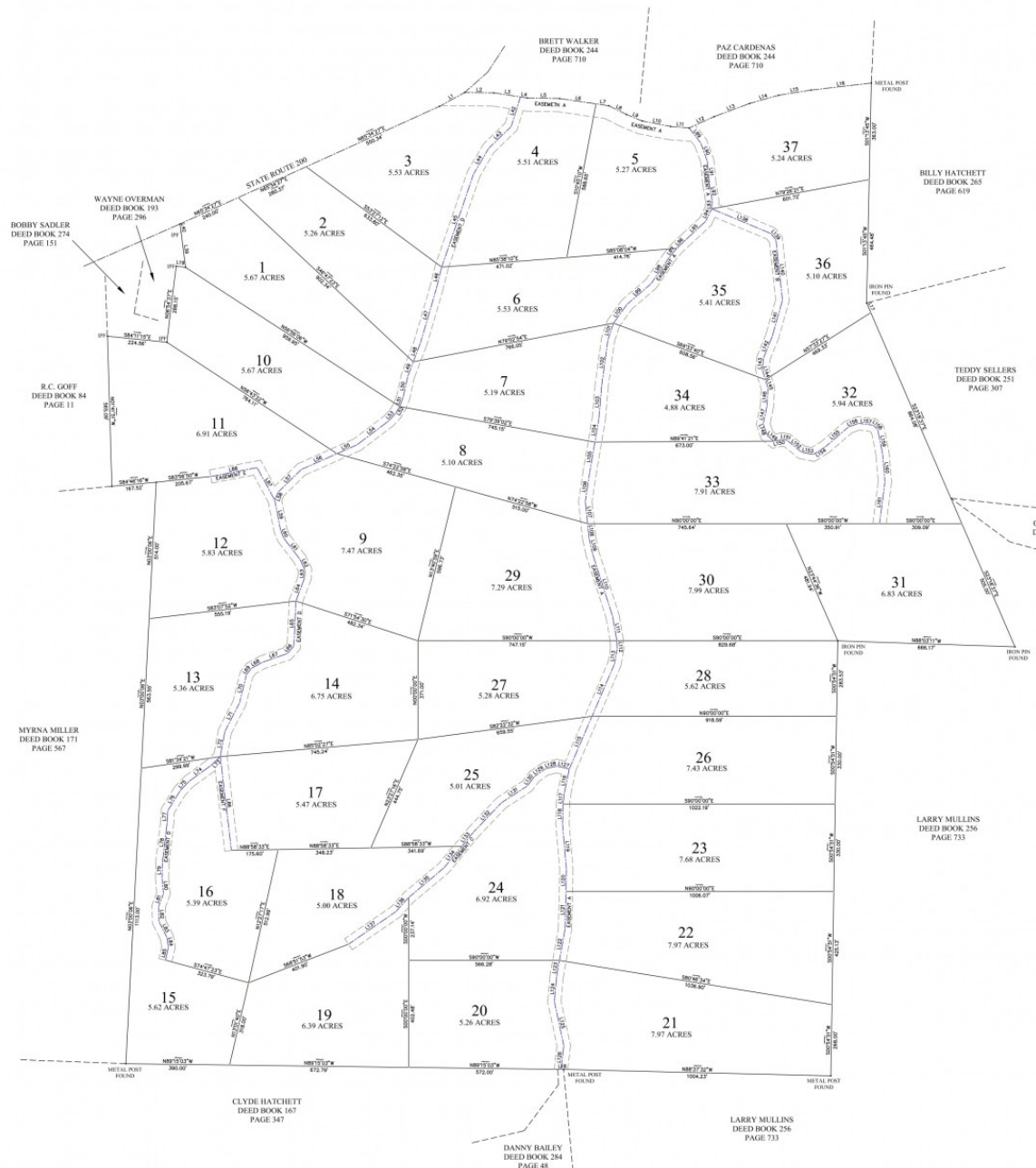


TWIN RIVERS



LINE	TABLE	1.39	1.40	1.41	1.42	1.43	1.44	1.45	1.46	1.47	1.48	1.49	1.50	1.51	1.52	1.53	1.54	1.55	1.56	1.57	1.58	1.59	1.60	1.61	1.62	1.63	1.64	1.65	1.66	1.67	1.68	1.69	1.70	1.71	1.72	1.73	1.74	1.75	1.76	1.77	1.78	1.79	1.80	1.81	1.82	1.83	1.84	1.85	1.86	1.87	1.88	1.89	1.90	1.91	1.92	1.93	1.94	1.95	1.96	1.97	1.98	1.99	2.00																																																																																																																										
L1	11070	N40°10'00"W	1.40	35.45	N07°55'00"W	1.41	99.63	S37°30'00"W	1.42	44.41	S09°45'00"W	1.43	64.38	S00°00'00"W	1.44	104.86	S04°53'00"W	1.45	95.33	S09°05'00"W	1.46	30.94	S00°00'00"W	1.47	35.45	N07°55'00"W	1.48	44.41	S09°45'00"W	1.49	99.63	S37°30'00"W	1.50	44.41	S09°45'00"W	1.51	99.63	S37°30'00"W	1.52	44.41	S09°45'00"W	1.53	99.63	S37°30'00"W	1.54	44.41	S09°45'00"W	1.55	99.63	S37°30'00"W	1.56	44.41	S09°45'00"W	1.57	99.63	S37°30'00"W	1.58	44.41	S09°45'00"W	1.59	99.63	S37°30'00"W	1.60	44.41	S09°45'00"W	1.61	99.63	S37°30'00"W	1.62	44.41	S09°45'00"W	1.63	99.63	S37°30'00"W	1.64	44.41	S09°45'00"W	1.65	99.63	S37°30'00"W	1.66	44.41	S09°45'00"W	1.67	99.63	S37°30'00"W	1.68	44.41	S09°45'00"W	1.69	99.63	S37°30'00"W	1.70	44.41	S09°45'00"W	1.71	99.63	S37°30'00"W	1.72	44.41	S09°45'00"W	1.73	99.63	S37°30'00"W	1.74	44.41	S09°45'00"W	1.75	99.63	S37°30'00"W	1.76	44.41	S09°45'00"W	1.77	99.63	S37°30'00"W	1.78	44.41	S09°45'00"W	1.79	99.63	S37°30'00"W	1.80	44.41	S09°45'00"W	1.81	99.63	S37°30'00"W	1.82	44.41	S09°45'00"W	1.83	99.63	S37°30'00"W	1.84	44.41	S09°45'00"W	1.85	99.63	S37°30'00"W	1.86	44.41	S09°45'00"W	1.87	99.63	S37°30'00"W	1.88	44.41	S09°45'00"W	1.89	99.63	S37°30'00"W	1.90	44.41	S09°45'00"W	1.91	99.63	S37°30'00"W	1.92	44.41	S09°45'00"W	1.93	99.63	S37°30'00"W	1.94	44.41	S09°45'00"W	1.95	99.63	S37°30'00"W	1.96	44.41	S09°45'00"W	1.97	99.63	S37°30'00"W	1.98	44.41	S09°45'00"W	1.99	99.63	S37°30'00"W	2.00	44.41	S09°45'00"W



- GLOBAL POSITIONING SYSTEM NOTES:
1. For boundary and topographic (if applicable) aspects of this survey, RTK GPS positional data was observed on/between the dates of 8-2-2020.
 2. TOPCON HAPER V DUAL FREQUENCY RECEIVERS WERE USED.
 3. Datum/Epoch: NAD83(2011) Epoch 2010.00
 4. Published/Field Control Used: NONE
 5. Geoid Model: Gen10DA
 6. Combined Scale Factor: 0.99994521
 7. Positional accuracy of the GPS vectors does not exceed: Horizontal 0.06' - Vertical 0.08'

IRON PIN SET AT ALL PROPERTY CORNERS WITH 1/2 INCH REBAR STAMPED "ADVANCED LAND SURVY" ORANGE PLASTIC CAP UNLESS OTHERWISE NOTED.