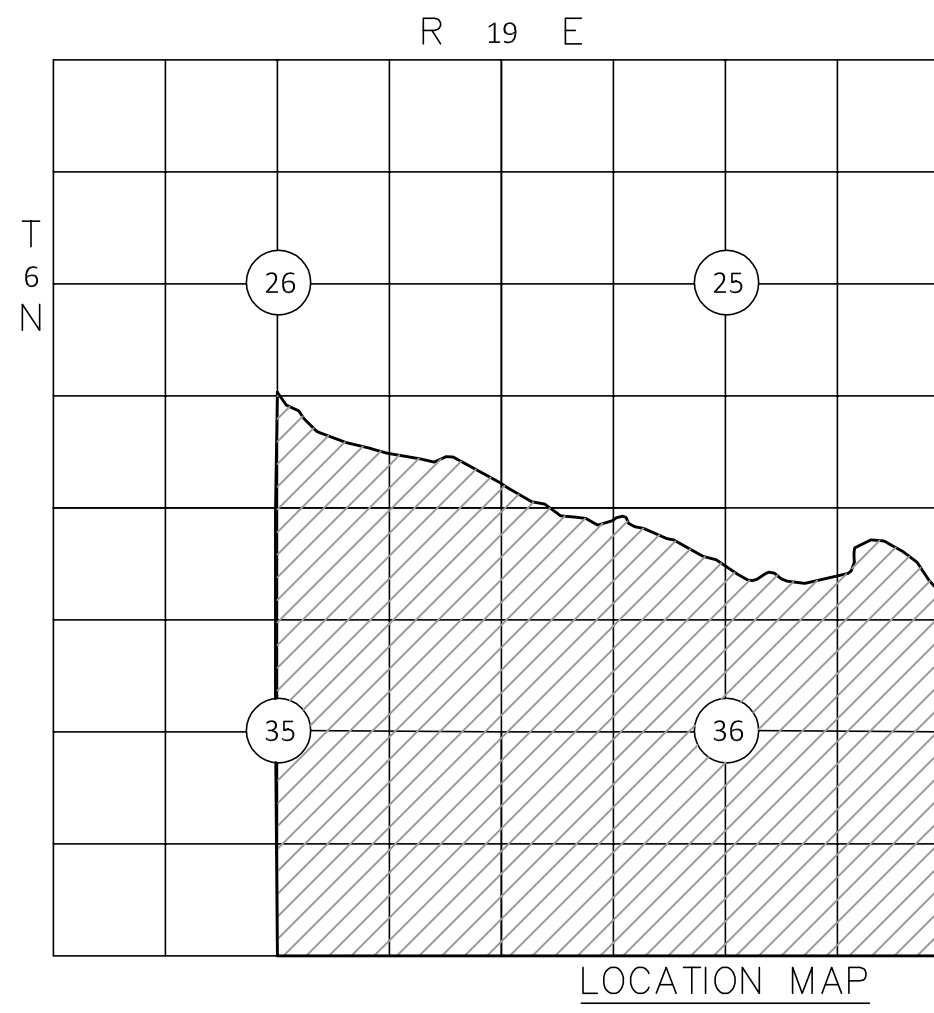
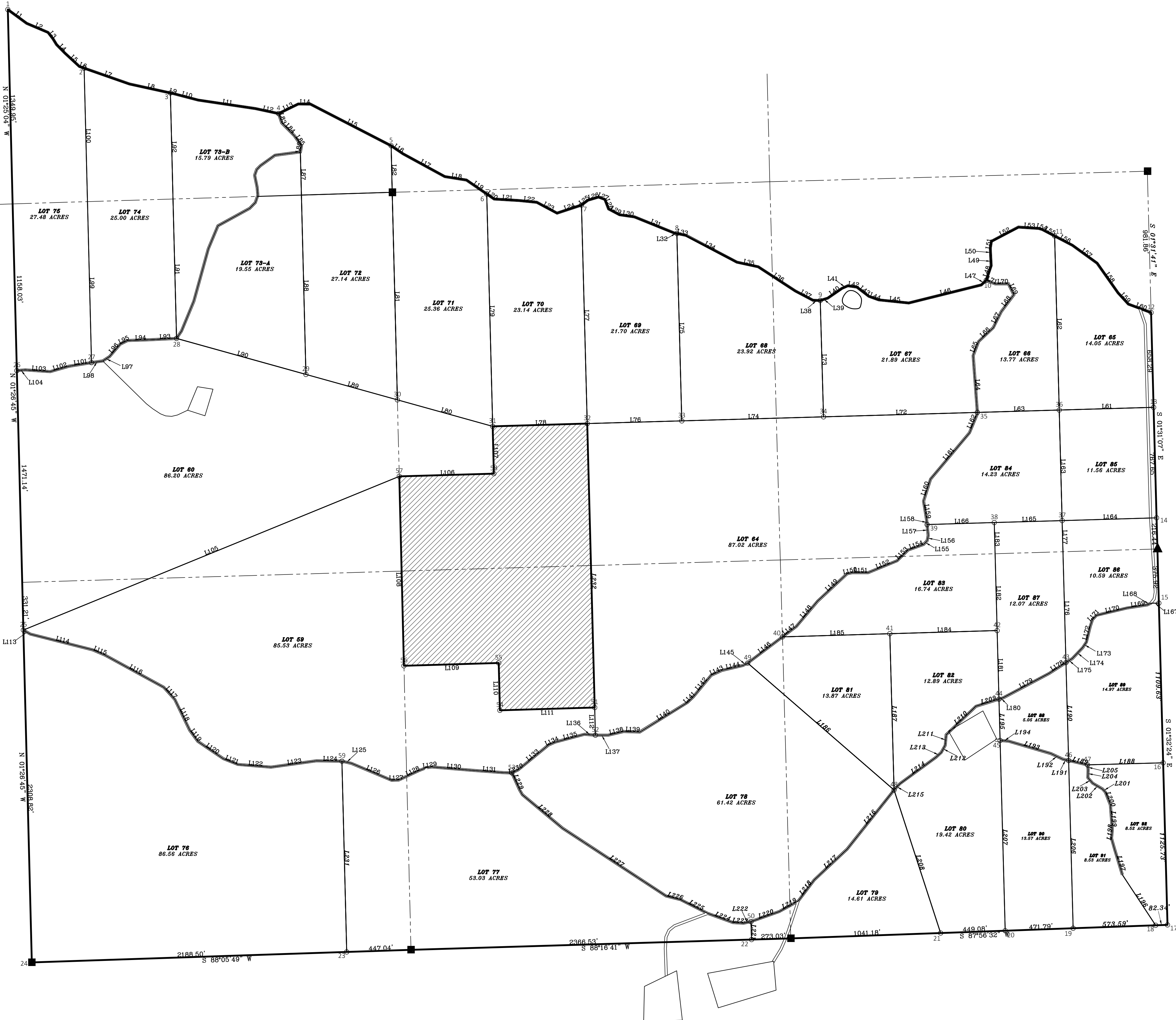


STONE CREEK II



Point	Northing	Easting
1	603117.359	2786305.845
2	602710.080	2786836.034
3	602538.405	2787434.967
4	602395.031	2788186.439
5	602171.591	2788968.086
6	601836.795	2789632.280
7	601759.763	2790290.479
8	601562.117	2790953.066
9	601090.849	2791949.070
10	601236.737	2793101.573
11	601545.334	2793576.909
12	601013.278	2794247.225
13	600355.224	2794264.672
14	599587.844	2794285.018
15	598995.700	2794300.856
16	597886.472	2794300.675
17	596761.144	2794360.927
18	596758.190	2794278.640
19	596737.591	2793705.424
20	596720.651	2793233.934
21	596704.525	2792785.144
22	596658.935	2791471.728
23	596572.979	2788655.479
24	596500.306	2786472.185
25	598808.390	2786413.933
26	600610.164	2786368.460
27	600665.821	2786887.083
28	600833.463	2787477.542
29	600583.681	2788376.262
30	600407.106	2789011.580
31	600223.137	2789673.501
32	600242.036	2790330.393
33	600260.935	2790987.285
34	600289.252	2791971.527
35	600319.998	2793040.192
36	600336.362	2793608.963
37	599568.666	2793629.317
38	599554.874	2793157.742
39	599528.176	2793655.837
40	598328.763	2793190.703
41	598041.700	2793198.420
42	597902.306	2793674.110
43	597872.883	2792432.159
44	598804.694	2793177.909
45	598582.176	2793655.837
46	598328.763	2793190.703
47	597872.883	2792432.159
48	597697.487	2792461.841
49	598579.132	2791444.971
50	596783.801	2791467.974
51	598270.562	2790382.241
52	598078.330	2790387.296
53	597816.424	2789806.822
54	598251.105	2789723.877
55	598579.795	2789715.481
56	598560.413	2789057.363
57	599875.473	2789024.760
58	599894.483	2789661.897
59	597897.542	2788626.640

LINE	BEARING	DISTANCE	LINE	BEARING	DISTANCE
L1	S 53°49'38"	862.53	L117	N 42°09'43"	114.76
L2	S 67°02'53"	150.91	L118	N 25°49'40"	306.64
L3	S 37°44'20"	85.23	L119	S 36°09'22"	85.61
L4	S 44°21'33"	81.21	L120	N 55°53'09"	214.76
L5	S 47°12'15"	138.99	L121	S 68°15'34"	108.14
L6	S 70°33'52"	84.97	L122	S 85°15'00"	230.77
L7	S 70°48'24"	83.15	L123	S 81°58'59"	118.62
L8	S 77°40'07"	291.01	L124	N 89°00'36"	177.60
L9	S 77°40'07"	22.65	L125	N 77°21'49"	166.69
L10	S 75°19'25"	176.69	L126	S 67°09'53"	304.49
L11	S 81°33'56"	102.36	L127	S 87°37'32"	118.35
L12	S 77°46'32"	164.14	L128	S 64°53'43"	103.20
L13	N 64°07'32"	162.05	L129	N 81°41'09"	89.41
L14	S 89°47'48"	83.94	L130	S 85°16'04"	290.98
L15	S 62°42'01"	831.20	L131	S 85°45'29"	207.37
L16	S 55°57'18"	100.36	L132	N 64°47'03"	48.08
L17	S 61°26'45"	150.13	L133	S 50°38'30"	173.13
L18	S 80°55'28"	162.09	L134	N 69°59'35"	10.28
L19	S 55°29'58"	170.94	L135	N 75°12'46"	210.05
L20	S 55°29'58"	82.22	L136	S 85°38'30"	17.00
L21	S 86°37'26"	175.81	L137	S 89°48'50"	87.93
L22	S 84°11'21"	821.60	L138	N 76°31'21"	110.91
L23	S 81°50'26"	189.33	L139	N 88°21'33"	112.42
L24	N 71°44'37"	178.97	L140	S 58°15'04"	199.94
L25	N 53°06'45"	186.34	L141	N 46°11'52"	65.92
L26	N 79°28'34"	176.17	L142	S 39°34'14"	194.20
L27	S 69°57'34"	177.34	L143	S 63°31'51"	112.04
L28	S 21°21'15"	171.05	L144	N 78°45'33"	189.61
L29	S 62°02'33"	85.71	L145	N 63°59'22"	17.45
L30	S 81°51'36"	105.10	L146	S 52°59'59"	102.32
L31	S 67°55'58"	297.70	L147	S 52°59'59"	110.93
L32	S 78°20'11"	110.93	L148	N 40°12'16"	112.90
L33	S 78°20'11"	110.93	L149	N 49°00'30"	178.38
L34	S 62°31'07"	159.73	L150	S 77°59'19"	116.15
L35	S 77°46'21"	152.02	L151	N 89°57'19"	110.96
L36	S 56°53'17"	106.99	L152	S 67°42'31"	117.97
L37	S 62°11'40"	139.59	L153	S 45°46'36"	107.23
L38	S 68°29'56"	110.10	L154	N 69°59'31"	114.08
L39	N 72°25'39"	181.73	L155	N 43°25'43"	11.14
L40	N 55°30'01"	120.79	L156	N 11°09'45"	85.95
L41	N 66°33'49"	143.71	L157	N 05°34'00"	176.76
L42	S 81°42'40"	163.19	L158	N 05°34'00"	116.42
L43	S 52°26'34"	114.99	L159	N 09°15'56"	114.93
L44	N 70°04'44"	172.23	L160	S 17°41'13"	116.24
L45	S 84°04'31"	110.48	L161	S 39°59'21"	112.02
L46	N 76°01'04"	119.05	L162	S 22°27'53"	111.38
L47	N 47°05'25"	146.41	L163	N 01°31'07"	117.97
L48	N 18°35'40"	118.22	L164	N 88°19'29"	115.98
L49	N 02°40'52"	110.59	L165	N 88°19'29"	171.78
L50	N 02°40'52"	110.59	L166	N 88°19'29"	116.64
L51	N 08°28'40"	148.12	L167	N 89°23'52"	115.15
L52	N 62°19'04"	112.40	L168	N 84°09'34"	116.34
L53	S 68°20'13"	119.66	L169	N 81°10'40"	113.42
L54	S 74°23'22"	116.53	L170	N 76°39'53"	117.05
L55	S 62°21'57"	117.52	L171	N 43°44'23"	111.60
L56	S 62°21'57"	119.97	L172	N 13°46'03"	110.40
L57	S 54°00'38"	111.55	L173	S 35°17'32"	115.88
L58	S 35°14'48"	112.40	L174	N 43°27'54"	114.99
L59	S 42°38'32"	116.33	L175	N 57°20'46"	112.96
L60	S 69°37'35"	117.96	L176	N 01°32'24"	117.41
L61	N 88°21'07"	115.98	L177	N 01°32'24"	116.44
L62	N 01°31'07"	110.90	L178	N 57°20'46"	115.91
L63	N 88°21'07"	115.98	L179	N 82°01'36"	115.91
L64	S 04°11'00"	118.95	L180	N 72°40'13"	111.24
L65	S 20°56'59"	114.97	L181	N 01°32'24"	117.10
L66	N 46°34'08"	110.26	L182	N 01°32'24"	116.44
L67	S 26°31'11"	112.09	L183	N 01°32'24"	116.44
L68	S 36°49'09"	116.46	L184	N 88°19'29"	116.07
L69	S 26°26'48"	115.33	L185	N 88°19'29"	116.07
L70	S 89°16'35"	111.59	L186	N 49°04'27"	1184.85
L71	S 68°31'46"	117.46	L187	N 01°33'59"	1185.80
L72	N 88°21'07"	110.90	L188	N 88°27'36"	115.48
L73	N 01°35'34"	110.91	L189	N 77°03'10"	114.70
L74	N 88°21'07"	115.98	L190	N 01°32'24"	117.05
L75	N 01°30'23"	110.63	L191	N 77°03'10"	114.70
L76	N 88°21'07"	115.98	L192	N 64°53'25"	117.70
L77	S 01°30'23"	110.63	L193	N 73°40'13"	116.61
L78	N 88°21'07"	115.98	L194	N 85°18'30"	118.22
L79	S 01°27'48"	111.41	L195	N 01°32'24"	117.17
L80	S 74°28'04"	117.01	L196	N 33°21'13"	116.34
L81	S 01°25'13"	114.40	L197	N 16°54'35"	119.96
L82	N 01°22'32"	110.32	L198	N 05°10'41"	116.42
L83	N 18°27'05"	116.43	L199	N 04°21'49"	113.53
L84	S 44°48'04"	114.81	L200	N 21°43'01"	118.74
L85	N 34°47'56"	116.62	L201	N 42°24'17"	117.45
L86	S 10°18'17"	112.10	L202	N 59°40'54"	117.84
L87	S 01°25'13"	110.23	L203	N 40°46'28"	115.15
L88	S 01°25'13"	112.45	L204	N 01°43'32"	116.36
L89	S 74°28'04"	117.01	L205	N 07°06'09"	112.99
L90	S 74°28'04"	117.01	L206	N 01°32'24"	117.05
L91	S 01°25'50"	116.57	L207	N 01°32'24"	117.05
L92	S 01°25'50"	116.57	L208	N 18°02'06"	1184.27
L93	N 87°12'06"	112.03	L209	N 72°40'13"	117.67
L94	S 87°59'12"	116.02	L210	N 46°20'58"	116.37
L95	S 63°39'16"	117.45	L211	N 04°45'00"	117.12
L96	N 40°44'35"	113.74	L212	N 29°10'28"	116.81
L97	N 57°03'31"	115.70	L213	N 47°21'09"	117.73
L98	N 81°43'28"	119.08	L214	N 53°49'35"	117.12
L99	S 01°25'50"	118.18	L215	N 42°27'10"	118.43
L100	S 01°25'50"	118.18	L216	N 38°27'59"	116.53
L101	N 80°51'08"	115.91	L217	N 46°55'53"	1183.61
L102	N 73°50'00"	115.27	L218	N 37°04'50"	1183.46
L103	N 86°03'32"	113.35	L219	N 60°57'27"	117.12
L104	N 85°31'16"	116.66	L220	N 70°28'04"	1188.04
L105	N 87°46'10"	118.20	L221	N 01°43'19"	1184.92
L106	N 88°20'35"	115.71	L222	N 78°06'17"	115.18
L107	N 01°27'48"	111.41	L223	N 86°47'15"	117.54
L108	N 01°25'13"	113.46	L224	N 70°03'12"	1187.55
L109	N 88°18'47"	116.34	L225	N 63°13'22"	1211.53
L110	N 01°27'48"	111.41	L226	N 75°50'37"	1183.84
L111	N 88°18'26"	115.65	L227	N 56°46'39"	1188.70
L112	N 01°30'23"	110.23	L228	N 50°10'45"	1183.68
L113	N 59°33'09"	116.59	L229	N 24°26'12"	1187.57
L114	N 25°50'09"	117.13	L230	N 64°47'03"	1188.08
L115	N 87°03'36"	111.11	L231	N 01°25'13"	1182.47
L116	N 61°18'27"	116.38	L232	N 01°30'23"	1186.45



CERTIFICATE OF SURVEY

I hereby certify that on December 26, 2016, that a survey was made under my supervision of the property described above and that the above plat is a true and correct representation of said survey. I also certify that this plat meets the Oklahoma Minimum Standards for the practice of Land Surveying as adopted by the Oklahoma State Board of Registration for Professional Engineers and Land Surveyors.

T.D. Chappell, Oklahoma Licensed Professional Land Surveyor No. 1673

SURV. BY: TC
DRAWN BY: JN
APPROVED BY: TC

CHAPPELL
LAND SURVEYING, PC

P.O. BOX 863
HUGO, OK 74743
580-326-6688
tchey@chappellsurveying.com
CA# 5072, Expires June 30, 2018

SCALE: 1"=400'
DATE: 01/9/2017
SURVEY #: S062.16
SHEET 1 OF 1