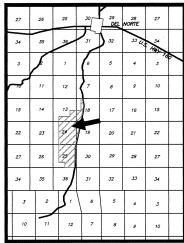
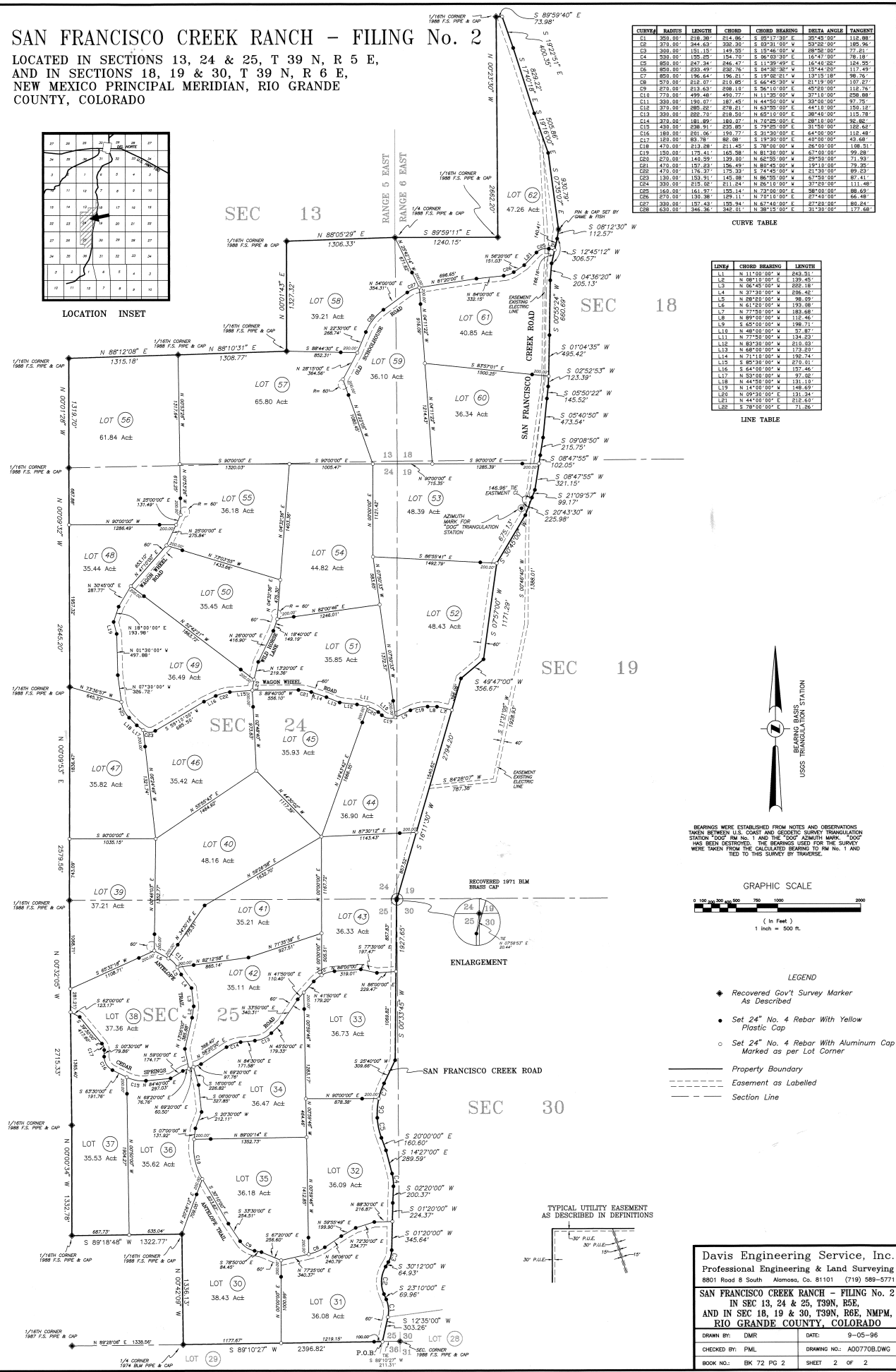


SAN FRANCISCO CREEK RANCH - FILING No. 2

LOCATED IN SECTIONS 13, 24 & 25, T 39 N, R 5 E,
AND IN SECTIONS 18, 19 & 30, T 39 N, R 6 E,
NEW MEXICO PRINCIPAL MERIDIAN, RIO GRANDE
COUNTY, COLORADO



LOCATION INSET

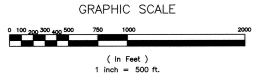


CURVE	RADIUS	LENGTH	CHORD	CHORD BEARING	DELTA ANGLE	TANGENT
C1	350.00	218.36	214.86	S 05°17'38" E	30°43'00"	116.88
C2	375.00	344.43	338.30	S 03°31'00" E	37°52'00"	189.96
C3	380.00	151.15	149.95	S 15°46'00" E	58°30'00"	77.81
C4	520.00	105.25	104.70	S 06°13'00" E	30°00'00"	76.18
C5	850.00	847.34	846.47	S 11°33'49" E	16°40'22"	124.95
C6	850.00	233.49	232.76	S 04°38'00" E	34°00'00"	112.49
C7	850.00	196.64	196.21	S 19°08'21" W	13°15'18"	98.76
C8	575.00	212.07	210.89	S 66°45'30" W	21°19'00"	107.27
C9	875.00	213.63	208.10	S 06°10'00" E	45°00'00"	116.76
C10	775.00	499.48	490.77	N 11°35'00" W	37°10'00"	298.88
C11	520.00	196.07	192.45	N 44°50'00" W	33°00'00"	97.75
C12	375.00	285.82	278.21	N 63°35'00" E	44°10'00"	150.12
C13	330.00	200.71	201.50	N 05°10'00" E	38°40'00"	115.78
C14	375.00	181.89	180.07	N 70°25'00" E	28°10'00"	92.82
C15	495.00	298.91	295.89	S 79°25'00" E	31°58'00"	155.62
C16	185.00	201.06	199.77	S 31°30'00" E	44°00'00"	115.48
C17	185.00	89.78	88.98	S 19°30'00" E	40°00'00"	43.68
C18	475.00	213.88	211.45	S 78°00'00" W	26°50'00"	108.51
C19	150.00	175.41	165.98	N 81°38'00" W	67°00'00"	99.28
C20	875.00	148.90	149.00	N 62°50'00" W	28°00'00"	71.92
C21	475.00	157.83	156.49	N 80°43'00" W	19°10'00"	79.35
C22	475.00	176.97	173.53	S 74°45'00" W	23°00'00"	89.23
C23	135.00	153.91	145.08	N 86°55'00" W	67°50'00"	87.41
C24	330.00	215.05	211.24	N 26°10'00" W	37°00'00"	111.48
C25	160.00	161.97	156.14	N 73°00'00" E	36°50'00"	88.63
C26	275.00	132.38	129.11	N 70°10'00" E	27°40'00"	66.48
C27	330.00	157.43	155.94	N 62°40'00" E	27°00'00"	80.24
C28	630.00	346.96	345.01	N 38°15'00" E	31°30'00"	172.68

CURVE TABLE

LINE#	CHORD BEARING	LENGTH
L1	N 11°10'00" W	242.31
L2	N 08°45'00" W	226.45
L3	N 06°45'00" W	222.18
L4	N 27°50'00" W	296.42
L5	N 28°50'00" W	98.09
L6	N 27°50'00" W	193.08
L7	N 77°50'00" W	183.68
L8	N 89°00'00" W	177.01
L9	S 65°00'00" W	198.71
L10	N 48°00'00" W	57.87
L11	N 77°50'00" W	134.23
L12	N 83°30'00" W	210.03
L13	N 68°00'00" W	179.22
L14	N 21°10'00" W	192.74
L15	S 60°30'00" W	272.01
L16	S 64°00'00" W	157.46
L17	N 30°00'00" W	97.06
L18	N 44°00'00" W	131.16
L19	N 14°00'00" W	148.69
L20	N 09°00'00" W	131.34
L21	N 44°00'00" E	212.65
L22	S 78°00'00" W	71.26

LINE TABLE



GRAPHIC SCALE
(In Feet)
1 inch = 500 ft.

- LEGEND
- Recovered Gov't Survey Marker As Described
 - Set 24" No. 4 Rebar With Yellow Plastic Cap
 - Set 24" No. 4 Rebar With Aluminum Cap Marked as per Lot Corner
 - Property Boundary
 - Easement as Labeled
 - Section Line

Davis Engineering Service, Inc.
Professional Engineering & Land Surveying
8801 Road 8 South Alamosa, Co. 81101 (719) 589-5771

SAN FRANCISCO CREEK RANCH - FILING No. 2
IN SEC 13, 24 & 25, T39N, R5E,
AND IN SEC 18, 19 & 30, T39N, R6E, NMPM,
RIO GRANDE COUNTY, COLORADO

DRAWN BY: DMR DATE: 9-05-96
CHECKED BY: PML DRAWING NO.: A007708.DWG
BOOK NO.: BK 72 PG 2 SHEET 2 OF 2

20250801
 802421208 011208 B 11.01.20
 Lela Ann Bonnett, Registered Rio Grande City, CO