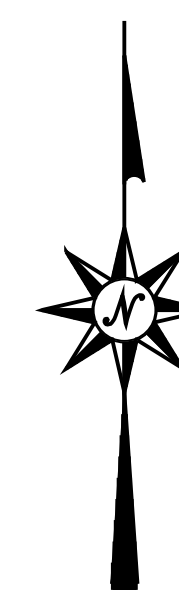
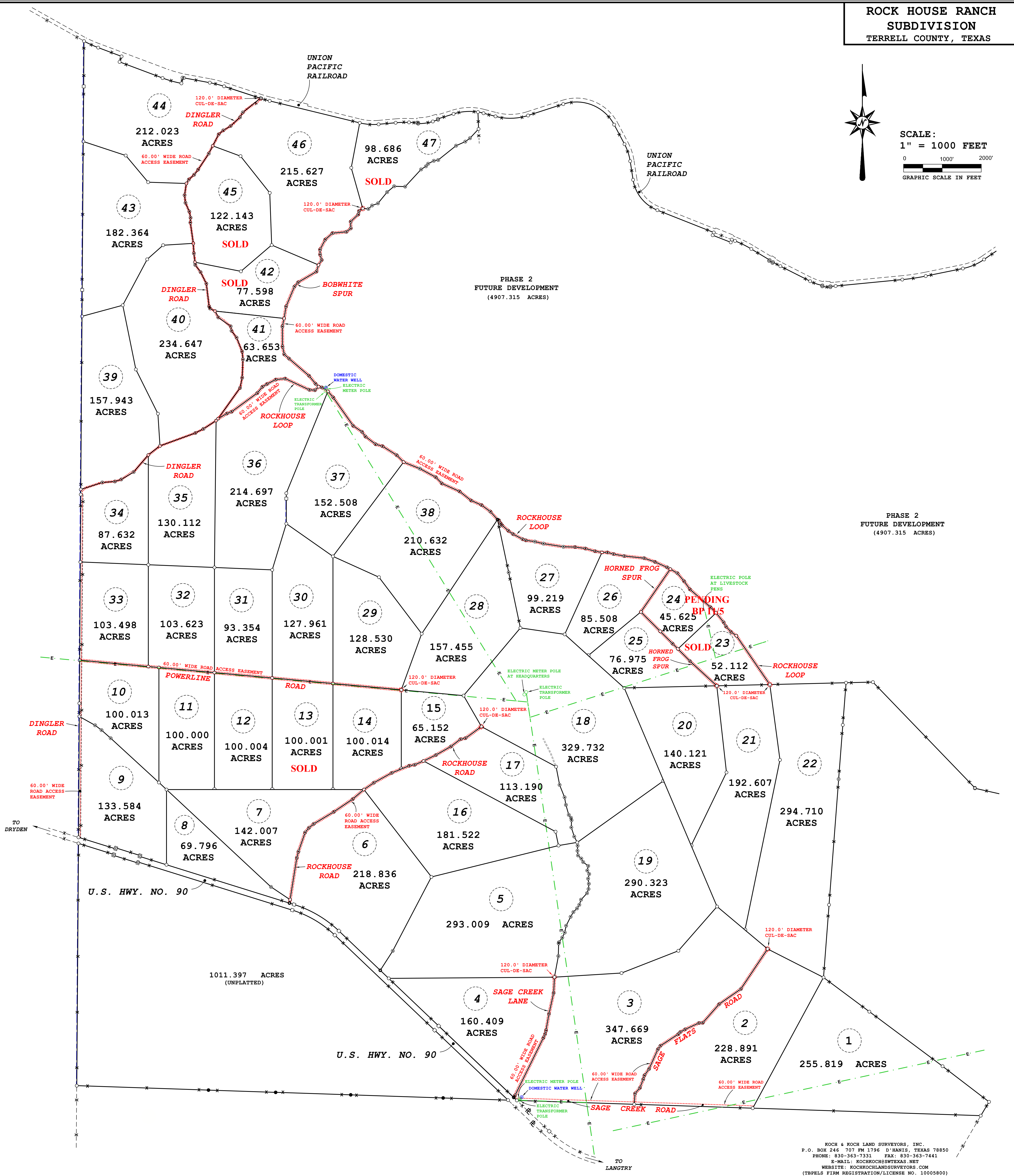


**ROCK HOUSE RANCH
SUBDIVISION
TERRELL COUNTY, TEXAS**



SCALE:
1" = 1000 FEET
0 1000' 2000'
GRAPHIC SCALE IN FEET



PHASE 2
FUTURE DEVELOPMENT
(4907.315 ACRES)

PHASE 2
FUTURE DEVELOPMENT
(4907.315 ACRES)

KOCH & KOCH LAND SURVEYORS, INC.
P.O. BOX 246 707 FM 1796 D'HANIS, TEXAS 78850
PHONE: 830-363-7331 FAX: 830-363-7441
E-MAIL: KOCHKOCHE@SWTEXAS.NET
WEBSITE: KOCHKOCHLANDSURVEYORS.COM
(TBPELS FIRM REGISTRATION/LICENSE NO. 10005800)