

REVISED FINAL PLAT RICHLAND PARK

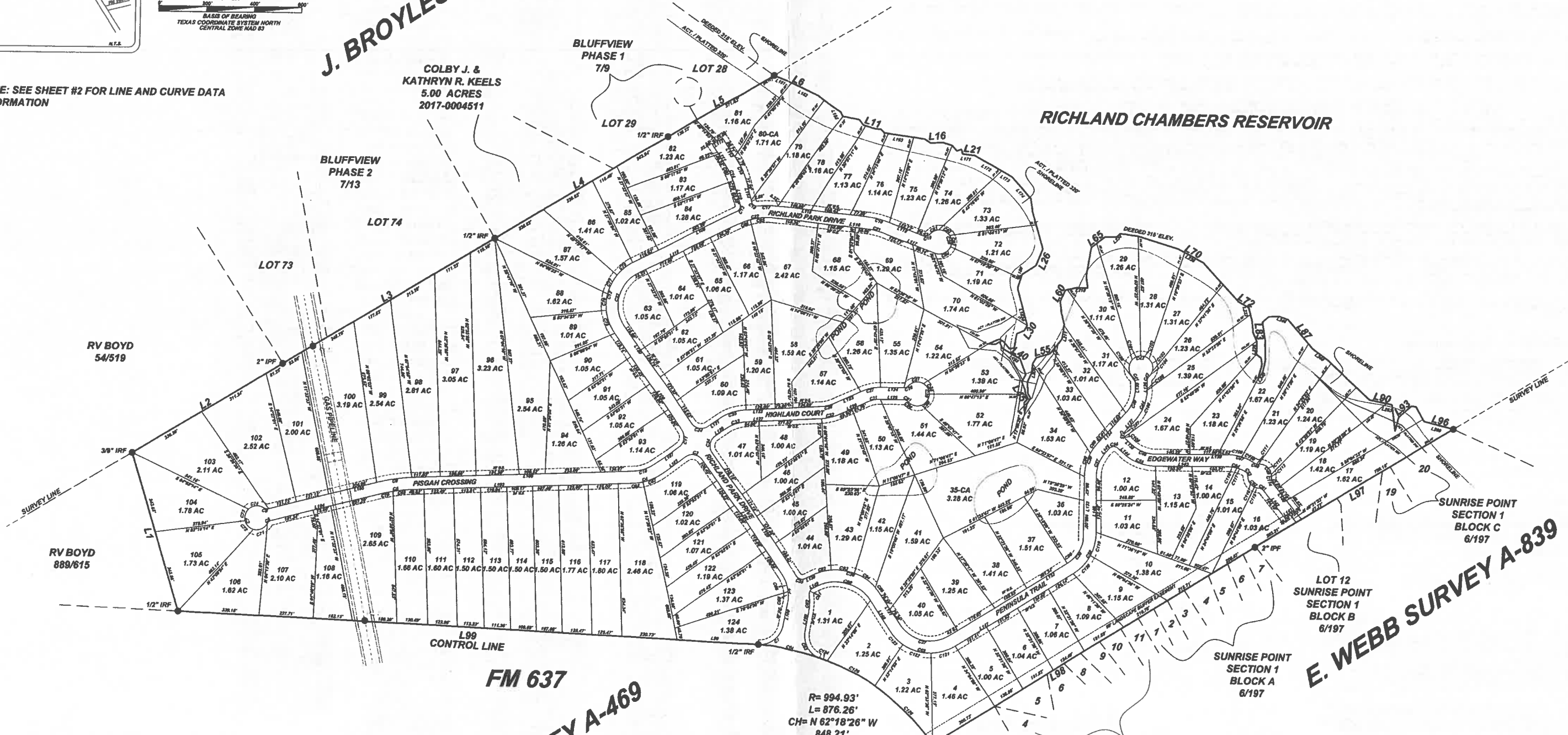
REVISED PLAT TO REPLACE RECORDED PLAT
VOLUME 9, PAGES 263, 264, 265, 266

NOTE: SEE SHEET #2 FOR LINE AND CURVE DATA INFORMATION

J. BROYLES SURVEY A-78

COLBY J. &
KATHRYN R. KEELS
5.00 ACRES
2017-0004511

RICHLAND CHAMBERS RESERVOIR



RV BOYD
54/519

RV BOYD
889/615

FM 637

E. KIRKLAND SURVEY A-469

E. WEBB SURVEY A-839

R= 994.93'
L= 876.26'
CH= N 62°18'28" W
848.21'

TRACY R. &
BRENT FOLMAR
5.00 ACRES
2013-0007482

OWNER/DEVELOPER
RC ACQUISITIONS, LLC
9827 COGDILL ROAD, STE 1
KNOXVILLE, TENNESSEE 37932
(800)-675-1800

ENGINEER:
KSA ENGINEERING
DARREL KOTZUR, P.E.
6781 OAK HILL BLVD.,
TYLER, TEXAS 75703
(903)-581-8141 EXT. 1322

REVISED PLAT TO REPLACE RECORDED PLAT

124 LOTS
188.11 ACRES
E. KIRKLAND A-469
CITY OF MILDRED
NAVARRO COUNTY, TEXAS

HARDIN SURVEYING

PO BOX 587
MABANK, TEXAS 75147
(903) 887-5674
FIRM# 10114700

DATE PERFORMED: OCTOBER 21, 2020
SCALE: 1" = 200 FEET
WORK ORDER # 2009193
FIELD BY: GF
DRAWN BY: JH / TP
CHECKED BY: TP

