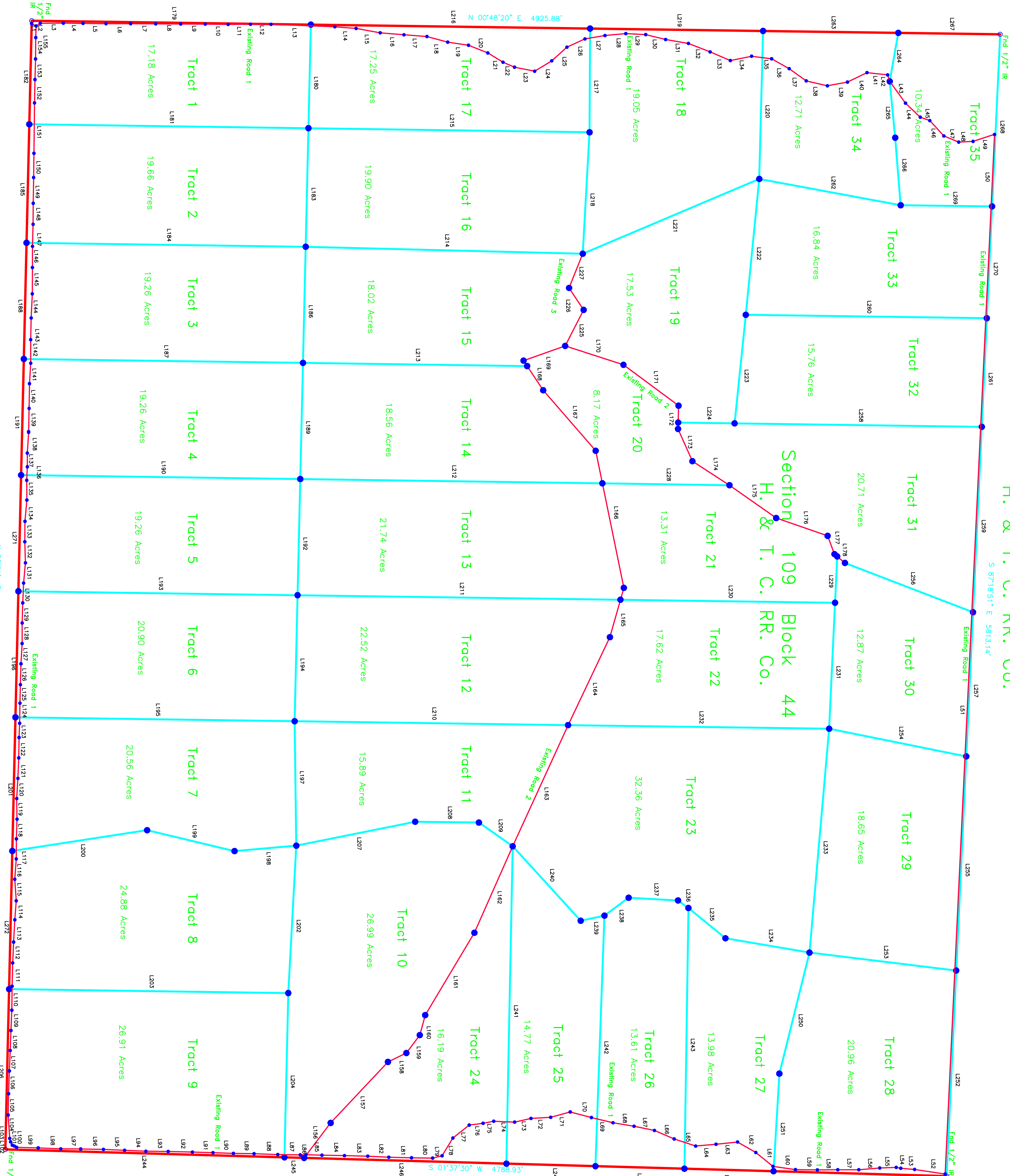


# Red Rock Ranch

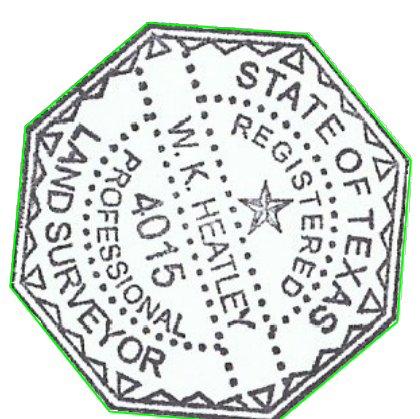
Section 98  
H. & T. C. RR. Co.

Section 108  
H. & T. C. RR. Co.

Section 110  
H. & T. C. RR. Co.



LINE	BEARING	DISTANCE	LINE	BEARING	DISTANCE
1	N 89°39'45\"	5741.177	131	S 78°51'14\"	5813.14
2	N 00°48'20\"	4925.88	132	N 89°39'45\"	5741.177
3	N 89°39'45\"	5741.177	133	N 89°39'45\"	5741.177
4	N 89°39'45\"	5741.177	134	N 89°39'45\"	5741.177
5	N 89°39'45\"	5741.177	135	N 89°39'45\"	5741.177
6	N 89°39'45\"	5741.177	136	N 89°39'45\"	5741.177
7	N 89°39'45\"	5741.177	137	N 89°39'45\"	5741.177
8	N 89°39'45\"	5741.177	138	N 89°39'45\"	5741.177
9	N 89°39'45\"	5741.177	139	N 89°39'45\"	5741.177
10	N 89°39'45\"	5741.177	140	N 89°39'45\"	5741.177
11	N 89°39'45\"	5741.177	141	N 89°39'45\"	5741.177
12	N 89°39'45\"	5741.177	142	N 89°39'45\"	5741.177
13	N 89°39'45\"	5741.177	143	N 89°39'45\"	5741.177
14	N 89°39'45\"	5741.177	144	N 89°39'45\"	5741.177
15	N 89°39'45\"	5741.177	145	N 89°39'45\"	5741.177
16	N 89°39'45\"	5741.177	146	N 89°39'45\"	5741.177
17	N 89°39'45\"	5741.177	147	N 89°39'45\"	5741.177
18	N 89°39'45\"	5741.177	148	N 89°39'45\"	5741.177
19	N 89°39'45\"	5741.177	149	N 89°39'45\"	5741.177
20	N 89°39'45\"	5741.177	150	N 89°39'45\"	5741.177
21	N 89°39'45\"	5741.177	151	N 89°39'45\"	5741.177
22	N 89°39'45\"	5741.177	152	N 89°39'45\"	5741.177
23	N 89°39'45\"	5741.177	153	N 89°39'45\"	5741.177
24	N 89°39'45\"	5741.177	154	N 89°39'45\"	5741.177
25	N 89°39'45\"	5741.177	155	N 89°39'45\"	5741.177
26	N 89°39'45\"	5741.177	156	N 89°39'45\"	5741.177
27	N 89°39'45\"	5741.177	157	N 89°39'45\"	5741.177
28	N 89°39'45\"	5741.177	158	N 89°39'45\"	5741.177
29	N 89°39'45\"	5741.177	159	N 89°39'45\"	5741.177
30	N 89°39'45\"	5741.177	160	N 89°39'45\"	5741.177
31	N 89°39'45\"	5741.177	161	N 89°39'45\"	5741.177
32	N 89°39'45\"	5741.177	162	N 89°39'45\"	5741.177
33	N 89°39'45\"	5741.177	163	N 89°39'45\"	5741.177
34	N 89°39'45\"	5741.177	164	N 89°39'45\"	5741.177
35	N 89°39'45\"	5741.177	165	N 89°39'45\"	5741.177



I hereby certify that this survey was made on the ground and that this plat is a true and correct copy of the same.

William K. Heasley  
Registered Professional Land Surveyor #4015  
From #1007500

Plat showing the Red Rock Ranch Subdivision of 644.17 acres of land out of Section 109, Block 44, H. & T. C. RR. Co. Lands, A-245, Knox County, Texas, and being the same land as described in deed recorded in Volume 360 Page 151, Official Public Records, Knox County, Texas.

**SURVEY PLAT IN KNOX COUNTY TEXAS**

**HEATLEY SURVEYING**  
P.O. BOX 1  
BRECKENRIDGE, TX 76424  
(254) 559-8914  
Print Number: KN-106D

Note:  
Easements not shown on plat unless otherwise noted.  
MAD 1983 Survey Ordinance.  
SCALE: 1" = 300'  
DATE: 2-10-2018  
FILE: RED ROCK RANCH

- = Section 1/2" IR with 4015
- = Road easement lines and survey lines
- = Tract boundary lines
- = Survey lines