

WEEKI-WACHEE WOODLANDS UNIT NO. 1

A SUBDIVISION LYING IN AND BEING A PART OF SECTIONS 15 & 16, TOWNSHIP 23 SOUTH, RANGE 17 EAST, HERNANDO COUNTY, FLORIDA, AND MORE PARTICULARLY DESCRIBED AS FOLLOWS:

BEGINNING AT THE SOUTHWEST CORNER OF THE NW 1/4 OF SECTION 15, TOWNSHIP 23 SOUTH, RANGE 17 EAST, THENCE N89°56'01"E. ALONG THE SOUTH LINE OF THE NORTH 1/2 OF SAID SECTION 15, A DISTANCE OF 3327.75 FEET; THENCE N0°06'03"W. A DISTANCE OF 2169.50 FEET; THENCE S89°48'05"W. A DISTANCE OF 699.73 FEET; THENCE N89°56'27"W. A DISTANCE OF 1493.18 FEET; THENCE S38°49'17"W. A DISTANCE OF 849.12 FEET TO POINT OF CURVATURE OF A CIRCULAR CURVE TO THE RIGHT, SAID CURVE HAVING A RADIUS OF 25 FEET; THENCE ALONG THE ARC OF SAID CIRCULAR CURVE A DISTANCE OF 27.51 FEET TO POINT OF TANGENCY; THENCE N65°45'10"W. A DISTANCE OF 165.65 FEET TO POINT OF CURVATURE OF A CIRCULAR CURVE TO THE LEFT, SAID CIRCULAR CURVE HAVING A RADIUS OF 100.0 FEET; THENCE ALONG THE ARC OF SAID CURVE A DISTANCE OF 131.65 FEET TO POINT OF TANGENCY; THENCE S38°49'17"W. A DISTANCE OF 436.18 FEET; THENCE S51°10'43"E. A DISTANCE OF 199.63 FEET TO POINT OF CURVATURE OF A CIRCULAR CURVE TO THE RIGHT, SAID CURVE HAVING A RADIUS OF 50.0 FEET; THENCE ALONG THE ARC OF SAID CURVE A DISTANCE OF 78.54 FEET TO POINT OF TANGENCY; THENCE S38°49'17"W. A DISTANCE OF 1297.60 FEET TO A POINT ON THE SOUTH LINE OF THE NE 1/4 OF SECTION 16, TOWNSHIP 23 SOUTH, RANGE 17 EAST; THENCE N89°50'34"E. ALONG THE SOUTH LINE OF THE NE 1/4 OF SAID SECTION 16, A DISTANCE OF 618.35 FEET TO THE POINT OF BEGINNING.

SCALE: 1" = 100'

NOTE: ALL LOTS TO HAVE 6-FOOT UTILITY EASEMENT ALONG REAR LOT LINES.

INDICATES P.R.M.

ADDED LOT NUMBERS W-230 & W-231
COASTAL ENGINEERING ASSOCIATES INC.
4-19-65
PER DAVID C BARTELT REQUEST
LETTER DATED 4-14-65



DEDICATION:

THE UNDERSIGNED HEREBY CERTIFIES THAT IT IS THE OWNER OF THE TRACT OF LAND HEREBY PLATTED AS WEEKI-WACHEE WOODLANDS, AND THAT IT DEDICATES TO THE PUBLIC ALL STREETS AND PUBLIC PLACES AS SHOWN ON THIS PLAT OF THE SUBDIVISION OF SAID LANDS.

SIGNED, SEALED AND DELIVERED IN THE PRESENCE OF:

BARTELT SUNSHINE CORPORATION

Sam V. Mace WITNESS
Louise G. Baya WITNESS

Lyle W. Bartelt PRESIDENT
David C. Bartelt SECRETARY-TREASURER

STATE OF FLORIDA

COUNTY OF Pasco

I HEREBY CERTIFY THAT ON THIS 30th DAY OF April A.D., 1960, BEFORE ME PERSONALLY APPEARED LYLE W. BARTELT AND DAVID C. BARTELT, PRESIDENT AND SECRETARY-TREASURER, RESPECTFULLY OF BARTELT SUNSHINE CORPORATION, A CORPORATION UNDER THE LAWS OF THE STATE OF FLORIDA, TO ME KNOWN TO BE THE PERSONS DESCRIBED IN AND WHO EXECUTED THE FOREGOING CERTIFICATE AND DEDICATION AND SEVERALLY ACKNOWLEDGED THE EXECUTION THEREOF TO BE THEIR FREE ACT AND DEED, AS SUCH OFFICERS, FOR THE USES AND PURPOSES THEREIN MENTIONED AND THAT THEY AFFIXED THERETO THE OFFICIAL SEAL OF SAID CORPORATION, AND SAID INSTRUMENT IS THE ACT AND DEED OF SAID CORPORATION. WITNESS MY HAND AND OFFICIAL SEAL THE DAY AND YEAR AFORESAID.

MY COMMISSION EXPIRES March 17, 1963
Louise G. Baya NOTARY PUBLIC
STATE OF Florida

ABSTRACT CERTIFICATE: THE RECORDS OF OUR OFFICE SHOW THAT BARTELT SUNSHINE CORPORATION IS THE APPARENT RECORDED OWNER OF LAND EMBRACED IN THE FOREGOING PLAT AND THERE ARE NO DELINQUENT TAXES THIS 2nd DAY OF May A.D. 1960.

Langston Title Insurance Co. of Hernando County
ABSTRACT COMPANY

BY: *Margaret C. Rosine*
Blair Mearns

SURVEYORS CERTIFICATE: I HEREBY CERTIFY THAT I SURVEYED THE LANDS EMBRACED IN THE FOREGOING PLAT, THAT SAID PLAT IS A TRUE REPRESENTATION OF THE LANDS EMBRACED THEREIN, THAT PERMANENT REFERENCE MONUMENTS HAVE BEEN PLACED AS REQUIRED BY LAW IN CHAPTER 177, FLORIDA STATUTES, AND AS SHOWN ON SAID PLAT. SURVEYED AND PLATTED IN APRIL, 1960.

Norman A. Dahl
FLORIDA REGISTERED SURVEYOR NO. 1349

COUNTY SURVEYOR: CHECKED AND APPROVED BY THE COUNTY SURVEYOR OF HERNANDO COUNTY, FLORIDA, THIS May 2nd DAY OF 1960 A.D. 1960.

Clifford E. Mammel
COUNTY SURVEYOR

APPROVAL: THIS IS TO CERTIFY THAT THIS PLAT WAS PRESENTED TO THE COUNTY COMMISSIONERS OF HERNANDO COUNTY, FLORIDA, AND APPROVED BY THEM FOR RECORD ON THE 2nd DAY OF May A.D. 1960.

ATTEST: *Leamon G. Varu* CLERK
Guy Harris CHAIRMAN

CLERK'S CERTIFICATE: I HEREBY CERTIFY THAT I HAVE EXAMINED THE FOREGOING PLAT AS PROVIDED BY LAW UNDER CHAPTER 177, FLORIDA STATUTES, AS AMENDED IN THE YEAR 1941, AND CERTIFY THAT THE SAME COMPLIES WITH PROVISIONS OF SAID LAW AND HAVE ACCORDINGLY FILED THE SAME IN PLAT BOOK 6 PAGE 88 THIS 4th DAY OF May A.D. 1960.

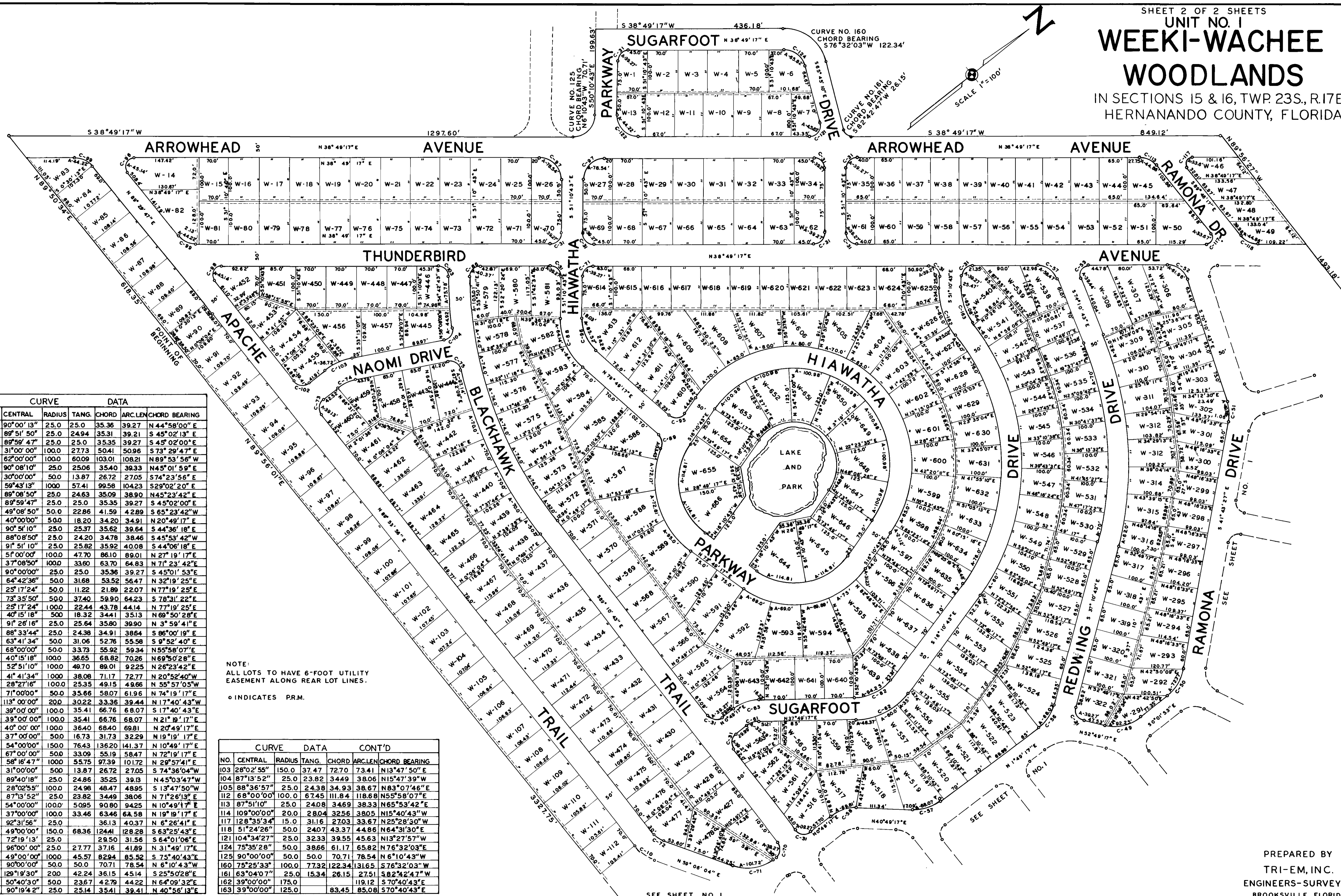
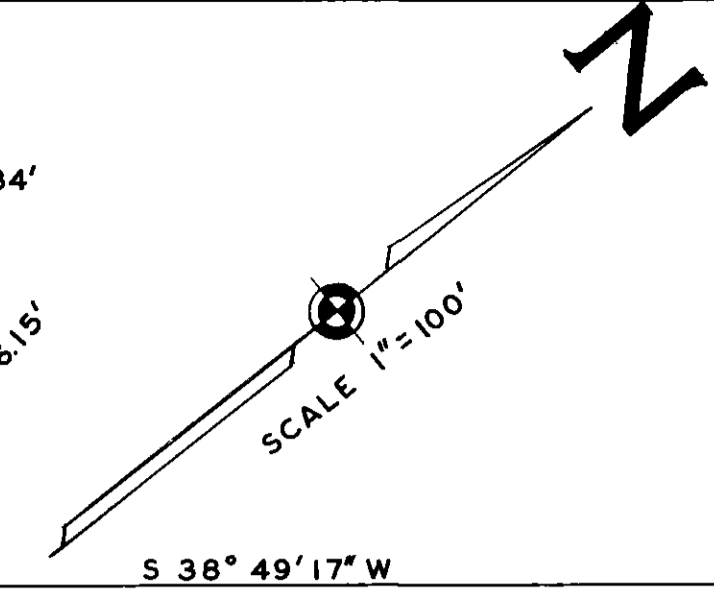
Leamon G. Varu
CLERK OF THE CIRCUIT COURT

PREPARED BY—
TRI-EM, INC
ENGINEERS-SURVEYORS
BROOKVILLE, FLORIDA.

88

WEEKI-WACHEE WOODLANDS

IN SECTIONS 15 & 16, TWP. 23S., R. 17E.,
HERNANANDO COUNTY, FLORIDA



NO.	CENTRAL	RADIUS	TANG.	CHORD	ARC LEN.	CHORD BEARING
1	90°00'13"	25.0	35.36	39.27	N 44°58'00"E	
3	89°51'50"	25.0	24.94	35.31	S 45°02'13"E	
5	89°59'47"	25.0	25.0	35.35	S 45°02'00"E	
10	31°00'00"	100.0	27.73	50.41	S 73°29'47"E	
11	62°00'00"	100.0	60.09	103.01	N 89°53'56"W	
12	90°08'10"	25.0	25.06	35.40	N 45°01'59"E	
13	30°00'00"	50.0	13.87	26.72	S 74°36'04"W	
14	59°43'13"	100.0	57.41	99.58	N 10°49'17"E	
15	89°08'50"	25.0	24.63	35.09	N 45°23'42"E	
16	89°59'47"	25.0	25.0	35.35	S 45°02'00"E	
19	49°08'50"	50.0	22.86	41.59	S 65°23'42"W	
20	40°00'00"	50.0	18.20	34.20	N 20°49'17"E	
21	90°51'10"	25.0	25.37	35.62	S 44°36'18"E	
24	88°08'50"	25.0	24.20	34.78	S 45°53'42"W	
25	91°51'10"	25.0	25.82	35.92	S 44°06'18"E	
27	51°00'00"	100.0	47.70	86.10	N 27°19'17"E	
28	37°08'50"	100.0	33.60	63.70	N 71°23'42"E	
31	90°00'00"	25.0	25.0	35.36	S 45°01'53"E	
32	64°42'36"	50.0	31.68	53.52	N 32°19'25"E	
33	25°17'24"	50.0	11.22	21.89	N 77°19'25"E	
36	73°35'50"	50.0	37.40	59.90	S 78°31'22"E	
37	25°17'24"	100.0	22.44	43.78	N 77°19'25"E	
40	40°15'18"	50.0	18.32	34.41	N 69°50'28"E	
41	91°26'16"	25.0	25.64	35.80	N 3°59'41"E	
42	88°33'44"	25.0	24.38	34.91	S 96°00'19"E	
43	63°41'34"	50.0	31.06	52.78	S 9°52'40"E	
44	68°00'00"	50.0	33.73	55.92	N 55°58'07"E	
47	40°15'18"	100.0	36.65	68.82	N 69°50'28"E	
49	52°51'10"	100.0	49.70	89.01	N 26°23'42"E	
50	41°41'34"	100.0	38.08	71.17	N 20°52'40"W	
51	28°27'16"	100.0	25.35	49.15	N 55°57'05"W	
52	71°00'00"	50.0	35.66	58.07	N 74°19'17"E	
53	113°00'00"	20.0	30.22	33.36	N 17°40'43"W	
56	39°00'00"	100.0	35.41	66.76	S 17°40'43"E	
57	39°00'00"	100.0	35.41	66.76	N 21°19'17"E	
58	40°00'00"	100.0	36.40	68.40	N 20°49'17"E	
61	37°00'00"	50.0	16.73	31.73	N 19°19'17"E	
62	54°00'00"	150.0	76.43	136.20	N 10°49'17"E	
67	67°00'00"	50.0	33.09	55.19	N 72°19'17"E	
71	58°16'47"	100.0	55.75	97.39	N 29°57'41"E	
72	31°00'00"	50.0	13.87	26.72	S 74°36'04"W	
73	89°40'18"	25.0	24.86	35.25	N 45°03'47"W	
74	28°02'55"	100.0	24.98	48.47	N 13°47'50"W	
75	87°13'52"	25.0	23.82	34.49	N 10°49'17"E	
82	54°00'00"	100.0	50.85	90.80	N 10°49'17"E	
83	37°00'00"	100.0	33.46	63.46	N 19°19'17"E	
86	92°31'56"	25.0	26.13	36.13	S 63°25'43"E	
88	49°00'00"	150.0	68.36	124.41	S 63°25'43"E	
89	72°19'13"	25.0	29.50	31.56	S 64°01'06"E	
95	96°00'00"	25.0	27.77	37.16	N 31°49'17"E	
96	49°00'00"	100.0	45.57	82.94	S 75°40'43"E	
97	90°00'00"	50.0	50.0	70.71	N 6°10'43"W	
98	129°19'30"	20.0	42.24	36.15	S 25°50'28"E	
99	50°40'30"	50.0	23.67	42.79	N 64°09'32"E	
102	90°19'42"	25.0	25.14	35.41	N 40°56'13"E	

NOTE:
ALL LOTS TO HAVE 6-FOOT UTILITY
EASEMENT ALONG REAR LOT LINES.
○ INDICATES PRM.

NO.	CENTRAL	RADIUS	TANG.	CHORD	ARC LEN.	CHORD BEARING
103	28°02'55"	150.0	37.47	72.70	73.41	N 13°47'50"E
104	87°13'52"	25.0	23.82	34.49	38.06	N 15°47'39"W
105	88°36'57"	25.0	24.38	34.93	38.67	N 83°07'46"E
112	68°00'00"	100.0	67.45	111.84	118.68	N 55°58'07"E
113	87°51'10"	25.0	24.08	34.69	38.33	N 65°53'42"E
114	109°00'00"	20.0	28.04	32.56	38.05	N 15°40'43"W
117	128°35'34"	15.0	31.16	27.03	33.67	N 25°28'30"W
118	51°24'26"	50.0	24.07	43.37	44.86	N 64°31'30"E
121	104°34'27"	25.0	32.33	39.55	45.63	N 13°27'57"W
124	75°35'28"	50.0	38.66	61.17	65.82	N 76°32'03"E
125	90°00'00"	50.0	50.0	70.71	78.54	N 6°10'43"W
160	75°25'33"	100.0	77.32	122.34	131.65	S 76°32'03"W
161	63°04'07"	25.0	15.34	26.15	27.51	S 82°42'47"W
162	39°00'00"	175.0			119.12	S 70°40'43"E
163	39°00'00"	125.0			83.45	S 70°40'43"E

SEE SHEET NO. 1

PREPARED BY
TRI-EM, INC.
ENGINEERS-SURVEYORS
BROOKSVILLE, FLORIDA.