

THIS MAP WAS PREPARED FOR ASSESSMENT PURPOSE ONLY

NW1/4 NE1/4 SEC.1 T29S R15W W.M. COOS COUNTY

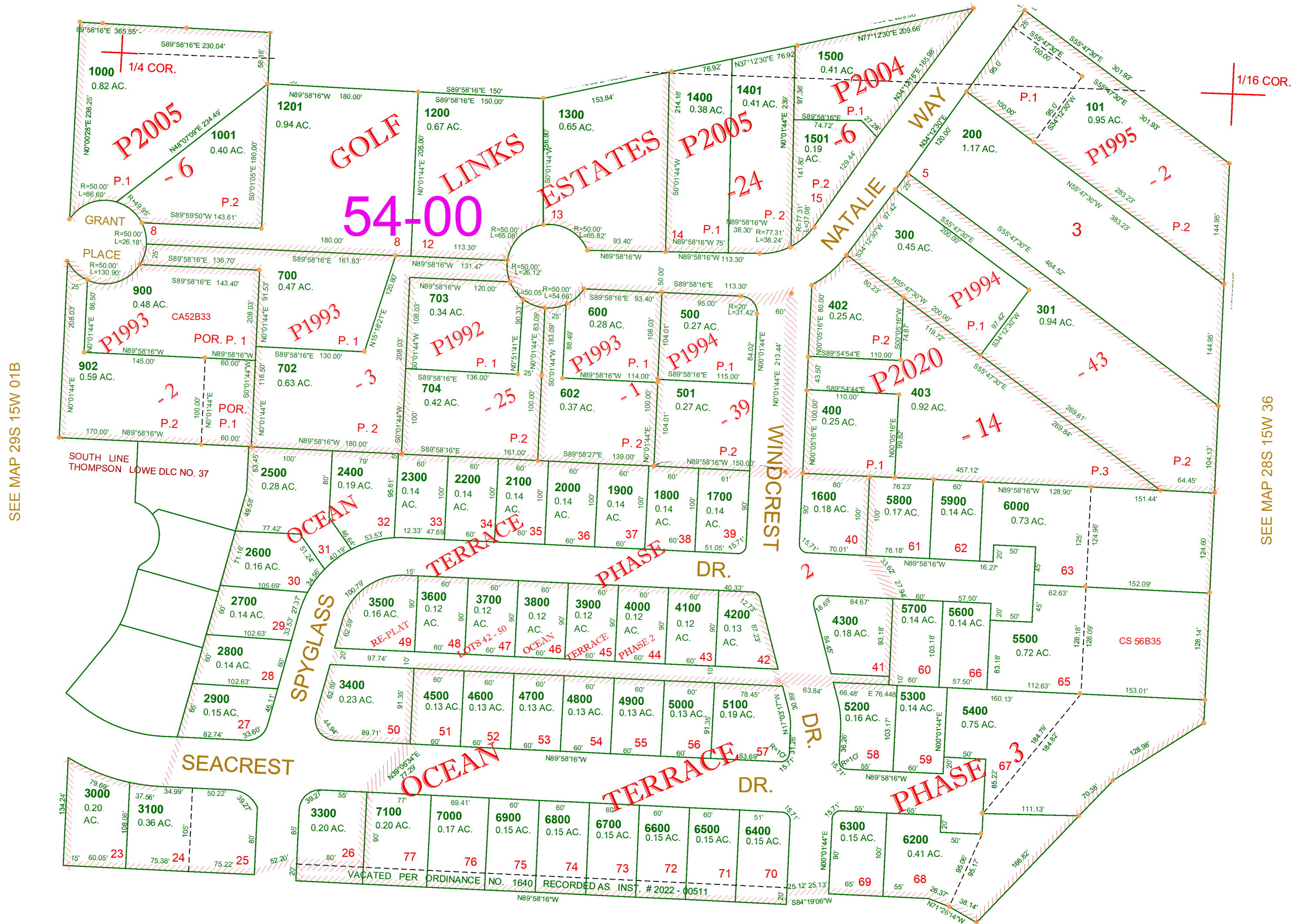
1" = 100'

29S 15W 01AB BANDON

CANCELLED NO.

- 901
- 601
- 701
- 800
- 801
- 1100
- 100
- 903
- 401
- 502
- 3200
- 6100

SEE MAP 28S 15W 36DC



SEE MAP 29S 15W 01B

SEE MAP 28S 15W 36

SEE MAP 29S 15W 01

1/16 COR.

06-28-2022

29S 15W 01AB BANDON