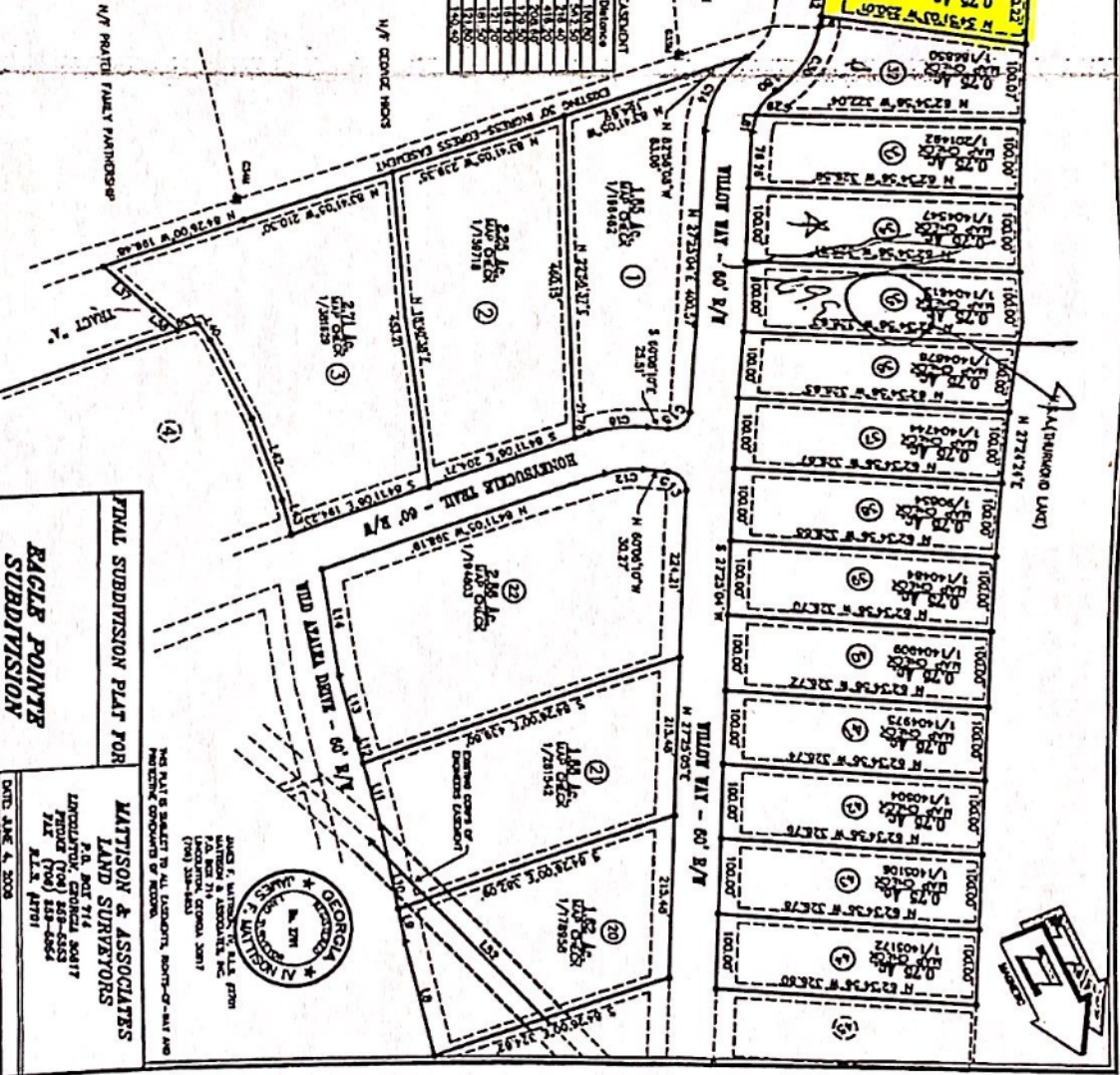


Curve	Bearing	Distance	Curve	Bearing	Distance
C1	S 11°04'12" W	154.57	C1	N 11°04'12" E	154.57
C2	S 11°04'12" W	154.57	C2	N 11°04'12" E	154.57
C3	S 11°04'12" W	154.57	C3	N 11°04'12" E	154.57
C4	S 11°04'12" W	154.57	C4	N 11°04'12" E	154.57
C5	S 11°04'12" W	154.57	C5	N 11°04'12" E	154.57
C6	S 11°04'12" W	154.57	C6	N 11°04'12" E	154.57
C7	S 11°04'12" W	154.57	C7	N 11°04'12" E	154.57
C8	S 11°04'12" W	154.57	C8	N 11°04'12" E	154.57
C9	S 11°04'12" W	154.57	C9	N 11°04'12" E	154.57
C10	S 11°04'12" W	154.57	C10	N 11°04'12" E	154.57
C11	S 11°04'12" W	154.57	C11	N 11°04'12" E	154.57
C12	S 11°04'12" W	154.57	C12	N 11°04'12" E	154.57
C13	S 11°04'12" W	154.57	C13	N 11°04'12" E	154.57
C14	S 11°04'12" W	154.57	C14	N 11°04'12" E	154.57
C15	S 11°04'12" W	154.57	C15	N 11°04'12" E	154.57
C16	S 11°04'12" W	154.57	C16	N 11°04'12" E	154.57
C17	S 11°04'12" W	154.57	C17	N 11°04'12" E	154.57
C18	S 11°04'12" W	154.57	C18	N 11°04'12" E	154.57
C19	S 11°04'12" W	154.57	C19	N 11°04'12" E	154.57
C20	S 11°04'12" W	154.57	C20	N 11°04'12" E	154.57
C21	S 11°04'12" W	154.57	C21	N 11°04'12" E	154.57
C22	S 11°04'12" W	154.57	C22	N 11°04'12" E	154.57
C23	S 11°04'12" W	154.57	C23	N 11°04'12" E	154.57
C24	S 11°04'12" W	154.57	C24	N 11°04'12" E	154.57
C25	S 11°04'12" W	154.57	C25	N 11°04'12" E	154.57
C26	S 11°04'12" W	154.57	C26	N 11°04'12" E	154.57
C27	S 11°04'12" W	154.57	C27	N 11°04'12" E	154.57
C28	S 11°04'12" W	154.57	C28	N 11°04'12" E	154.57
C29	S 11°04'12" W	154.57	C29	N 11°04'12" E	154.57
C30	S 11°04'12" W	154.57	C30	N 11°04'12" E	154.57

Curve	Bearing	Distance	Curve	Bearing	Distance
C1	S 11°04'12" W	154.57	C1	N 11°04'12" E	154.57
C2	S 11°04'12" W	154.57	C2	N 11°04'12" E	154.57
C3	S 11°04'12" W	154.57	C3	N 11°04'12" E	154.57
C4	S 11°04'12" W	154.57	C4	N 11°04'12" E	154.57
C5	S 11°04'12" W	154.57	C5	N 11°04'12" E	154.57
C6	S 11°04'12" W	154.57	C6	N 11°04'12" E	154.57
C7	S 11°04'12" W	154.57	C7	N 11°04'12" E	154.57
C8	S 11°04'12" W	154.57	C8	N 11°04'12" E	154.57
C9	S 11°04'12" W	154.57	C9	N 11°04'12" E	154.57
C10	S 11°04'12" W	154.57	C10	N 11°04'12" E	154.57
C11	S 11°04'12" W	154.57	C11	N 11°04'12" E	154.57
C12	S 11°04'12" W	154.57	C12	N 11°04'12" E	154.57
C13	S 11°04'12" W	154.57	C13	N 11°04'12" E	154.57
C14	S 11°04'12" W	154.57	C14	N 11°04'12" E	154.57
C15	S 11°04'12" W	154.57	C15	N 11°04'12" E	154.57
C16	S 11°04'12" W	154.57	C16	N 11°04'12" E	154.57
C17	S 11°04'12" W	154.57	C17	N 11°04'12" E	154.57
C18	S 11°04'12" W	154.57	C18	N 11°04'12" E	154.57
C19	S 11°04'12" W	154.57	C19	N 11°04'12" E	154.57
C20	S 11°04'12" W	154.57	C20	N 11°04'12" E	154.57
C21	S 11°04'12" W	154.57	C21	N 11°04'12" E	154.57
C22	S 11°04'12" W	154.57	C22	N 11°04'12" E	154.57
C23	S 11°04'12" W	154.57	C23	N 11°04'12" E	154.57
C24	S 11°04'12" W	154.57	C24	N 11°04'12" E	154.57
C25	S 11°04'12" W	154.57	C25	N 11°04'12" E	154.57
C26	S 11°04'12" W	154.57	C26	N 11°04'12" E	154.57
C27	S 11°04'12" W	154.57	C27	N 11°04'12" E	154.57
C28	S 11°04'12" W	154.57	C28	N 11°04'12" E	154.57
C29	S 11°04'12" W	154.57	C29	N 11°04'12" E	154.57
C30	S 11°04'12" W	154.57	C30	N 11°04'12" E	154.57



**TECHNICAL DATA:**  
 PREPARED BY: JAMES F. MATTHEWS  
 DATE: 12/15/2009  
 SCALE: 1" = 100'  
 SHEET NO. 2 OF 5

**FINAL SUBDIVISION PLAN FOR  
 BACLE POINTS  
 SUBDIVISION**  
 1870A, C.D.B.  
 LINCOLN COUNTY, GEORGIA

**MATTHEWS & ASSOCIATES  
 LAND SURVEYORS**  
 P.O. BOX 714  
 LINCOLN COUNTY, GEORGIA 30417  
 PHONE (706) 858-6533  
 FAX (706) 858-6544  
 ALEX. ATWELL

DATE: JUNE 4, 2009  
 SCALE: 1" = 100'  
 DRAWN BY: JFM  
 JOB NO.: 0901  
 TITLE: BACLE POINTS SUBDIVISION  
 SHEET NO. 2 OF 5

THIS PLAN IS SUBJECT TO ALL LOCAL, STATE, FEDERAL AND FEDERAL ORDINANCES AND REGULATIONS.

JAMES F. MATTHEWS  
 LAND SURVEYOR  
 LICENSE NO. 10000  
 STATE OF GEORGIA

