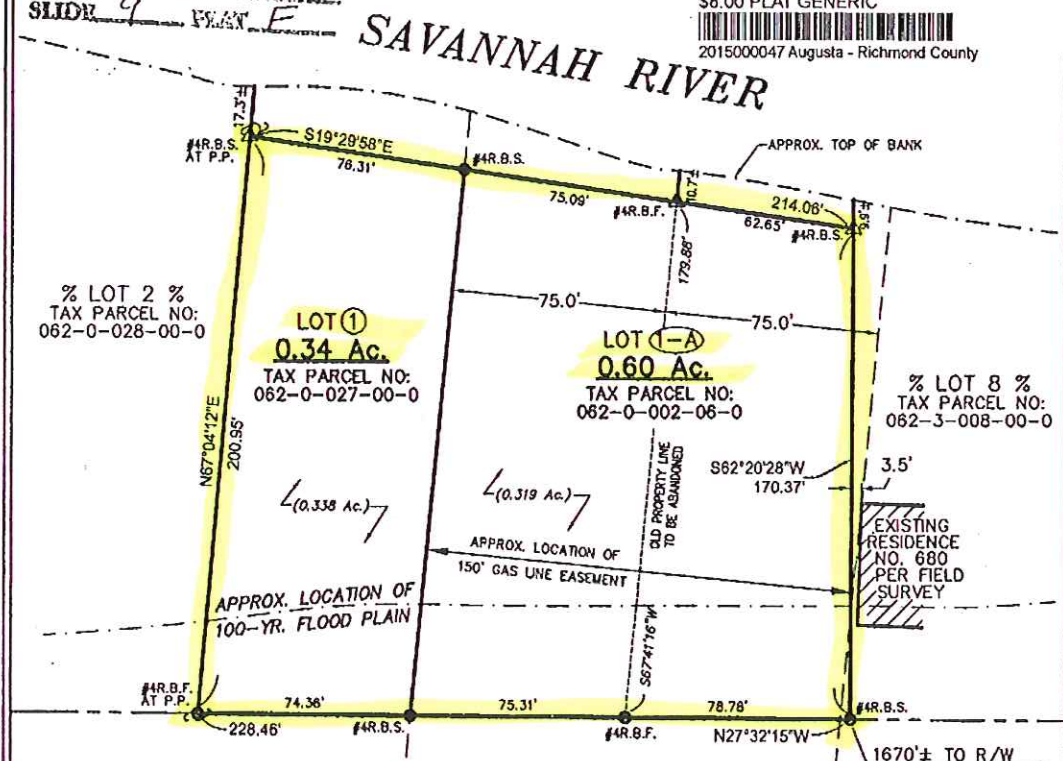


SAD PROPERTY IS HEREBY CONVEYED SUBJECT TO ANY AND ALL EASEMENTS AND RESTRICTIONS OF RECORD IN THE AFORESAID CLERK'S OFFICE, INCLUDING BUT NOT LIMITED TO:  
 (A) THE PROVISIONS OF PROTECTIVE COVENANTS FOR GOODALE LANDING RECORDED IN REALTY REEL 368, AT PAGE 2136, AFORESAID RECORDS.  
 (B) THE EASEMENTS FOR WATER AND SEWER SERVICES RESERVED IN THE DEED FROM THE CITY COUNCIL OF AUGUSTA RECORDED IN REALTY REEL 253, AT PAGE 1553, AFORESAID RECORDS.  
 (C) THE AMENDMENT TO AGREEMENT AND OPTION TO PURCHASE BETWEEN CITY COUNCIL OF AUGUSTA AND COH SPEC, INC. RECORDED IN REALTY REEL 368, AT PAGE 2131, AFORESAID CLERK'S RECORDS.  
 (D) UTILITY EASEMENT HELD BY SOUTHERN NATURAL GAS COMPANY AND GEORGIA POWER COMPANY RECORDED IN REALTY BOOK 20-11, AT PAGE 183, AND REALTY REEL 267, AT PAGE 2056, RESPECTIVELY, AFORESAID RECORDS.  
 (E) EASEMENT DEED TO SOUTHERN NATURAL GAS COMPANY RECORDED IN REALTY REEL 533, AT PAGES 1714-1717, AFORESAID RECORDS.



FILED IN PLAT CABINET E  
 SLIDE 9 PLAT F

Book 00011:0001 Augusta - Richmond County  
 201500047 01/02/2015 11:06:52.00  
 \$8.00 PLAT GENERIC  
 201500047 Augusta - Richmond County



Filed in this office:  
 Augusta - Richmond County  
 01/02/2015 11:06:52.00  
 Elaine C Johnson  
 Clerk of Superior Court

**RIVERFRONT DRIVE**  
 50' R/W

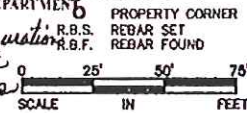
APPROVED SUBDIVISION  
 12/23/2014

By Melanie Wilson III  
 Legend  
 BY THE CITY OF AUGUSTA PLANNING & DEVELOPMENT DEPARTMENT

**REFERENCES:**

1. PLAT BY: JACK D. BARKER & ASSOC.  
 DATED: 10/2/1991  
 RECORDED: PC: A SLIDE: 77-H
2. PLAT BY: H. LAWSON GRAHAM & ASSOC.  
 DATED: 8/28/03 (REV. 1/30/04)  
 RECORDED: PC: C SLIDE: 98-H

THIS PLAT MEETS THE PROVISIONS OF ACT 500 OF THE GEORGIA GENERAL ASSEMBLY, RECONFIGURATION OF LOTS, AND DOES NOT REQUIRE APPROVAL OF THE MUNICIPAL OR COUNTY PLANNING COMMISSION OR GOVERNING AUTHORITY FOR FILING AND RECORDATION.



ACCORDING TO FEMA FIRM PANEL NUMBER 13245C0135G, MAP DATE 07/18/2011, PORTIONS OF THIS PROPERTY ARE LOCATED IN A 100 YEAR FLOOD PLAIN THIS PROPERTY MAY BE SUBJECT TO RESTRICTIONS AND OTHER EASEMENTS NOT SHOWN HEREON BUT MAY BE RECORDED IN THE CLERK OF COURTS OFFICE

**SURVEY DATA:**  
 FIELD CLOSURE 0.04'  
 (FROM RADIAL LOCATION)  
 ANGULAR ERROR 5"/ANGLE  
 NO ADJUSTMENT  
 PLAT CLOSURE 1 FOOT IN 10,000  
 TOPCON GTS - 230



PLAT FOR: **CHARLENE S. ECHOLS**

SHOWING LOTS 1 AND 1-A LOCATED AT 662 AND 678 RIVERFRONT DRIVE

**AUGUSTA LAND SURVEYING, LLC**

339 FURY'S FERRY ROAD SUITE 3, BOX 189  
 MARTINEZ, GA 30907  
 706-284-9578  
 LAND SURVEYING FIRM - LICENSE NO. LSP001116

STATE:	GEORGIA	
COUNTY:	RICHMOND	
AREA:	AUGUSTA	
JOB NO.:	F14-137	
SCALE:	1" = 50'	
FLD: BF	CHK: BF	DWN: CAM
DATE:	7/21/14	REV: 11/5/14