

WILLIAM SIMS

Tom Clouse
9/6/63
9/6/63

64.5 AC.
SHIRLEY POLK CHAPLINE

Friendship School (ELKHART)
2 AC. Reverted to Broughton
Laura Camp Per ANN Broughton Pritchell

1463/532
530/239

FERMIN J SANDOVAL
PETER H. FISHER CHURCH SERVICES
1407/167 271/16

SUSANNA MCDONALD
(.813 Co Rd)
1984/132
1974/22

64.7 AC.

29.735 AC.
Denise Tarrant
514.8
2393/562

EDW H. WILSON INC.
1457/68

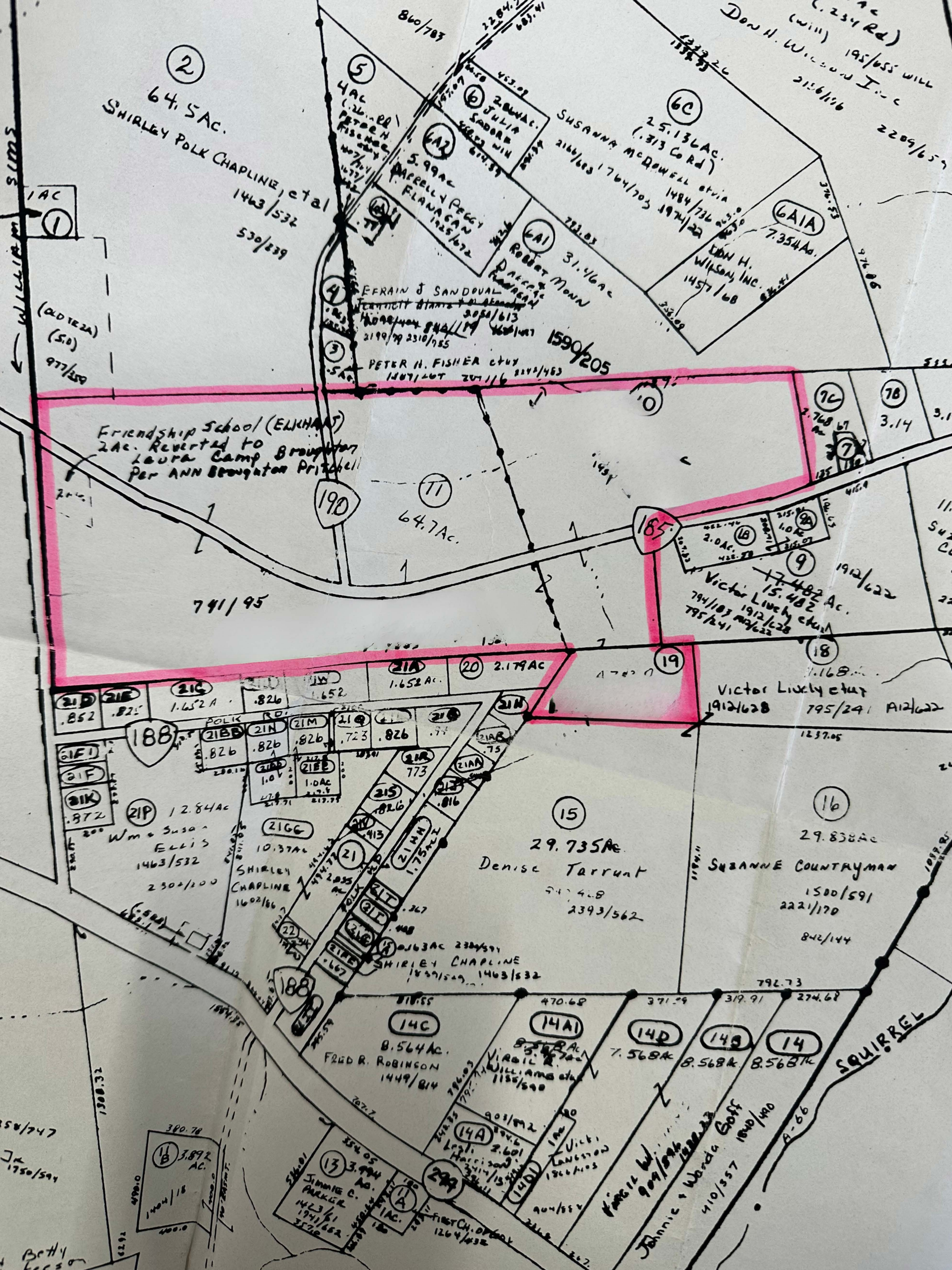
Victor Lively
15.482 AC.
1912/22
794/103
795/24
795/24
795/24

11.942 AC.
SUZANNE COUNTRYMAN
1500/591
794/180
222/130

ROBERT ERWIN

CRICK

BLK



②
64.5 AC.
SHIRLEY POLK CHAPLINE, et al
1463/532
530/839

⑤
4 AC
L. W. R. PETER H. FISHER
860/783
2284.5
687.41
⑥
2.06 AC.
JULIA SADOR
568.23
617.37
⑥A2
5.99 AC
MARELLY PEGGY
FLANAGAN
125/672
⑥A1
31.46 AC
Robert Monn
222.03
④
EFFRAIN J SANDOVAL
MARTINE STANIS
3054/613
14098/404 844/174 468/107
2199/79 2310/785
③
PETER H. FISHER et al
1407/407 207/116
1590/205

⑥C
25.136 AC.
(.313 Co Rd)
SUSANNA McDOWELL et al
2166/683 1764/703 1974/22
1484/736 2330
⑥A1A
7.354 AC.
DON H. WILSON, INC.
1457/68
2209/657
2156/116
195/655 will
(will) C. 234 Rd)

Friendship School (ELKHART)
2 AC. Reverted to
Laura Camp Broughton
Per ANN Broughton Pritchell

⑦
64.7 AC.
190

⑧
2.0 AC
⑨
15.482 AC.
Victor Lively et al
794/103 1912/628
795/241
1912/622
⑩
1.168 AC.
Victor Lively et al
1912/628 795/241 A12/622
1237.05

①
1 AC
①A
1.652 AC
①B
.826
①C
.826
①D
.826
①E
.826
①F
.826
①G
.826
①H
.826
①I
.826
①J
.826
①K
.826
①L
.826
①M
.826
①N
.826
①O
.826
①P
.826
①Q
.826
①R
.826
①S
.826
①T
.826
①U
.826
①V
.826
①W
.826
①X
.826
①Y
.826
①Z
.826
②
2.179 AC
②A
1.652 AC
②B
.826
②C
.826
②D
.826
②E
.826
②F
.826
②G
.826
②H
.826
②I
.826
②J
.826
②K
.826
②L
.826
②M
.826
②N
.826
②O
.826
②P
.826
②Q
.826
②R
.826
②S
.826
②T
.826
②U
.826
②V
.826
②W
.826
②X
.826
②Y
.826
②Z
.826
③
12.84 AC
Wm & Susan
ELLIS
1463/532
2302/200
④
10.37 AC
SHIRLEY
CHAPLINE
1602/66
⑤
1.75 AC
SHIRLEY CHAPLINE
1459/529 1463/532
⑥
8.564 AC
FRED R. ROBINSON
1449/814
⑦
8.564 AC
VIRGIL R. WILLIAMS et al
1155/590
⑧
7.568 AC
⑨
8.568 AC
⑩
8.568 AC
⑪
3.994 AC
JIMMIE C. PARKER
1423/61
1941/652
3570
⑫
3.892 AC
⑬
3.994 AC
⑭
2.601 AC
Legi. Harrison
3114/1511
⑮
2.601 AC
Vicki Langston
1867/103
⑯
9.09 AC
Johannie & Wanda Goff
410/557 1840/490
A-66

⑮
29.735 AC
Denise Tarrant
517/428
2393/562
⑯
29.838 AC
SUZANNE COUNTRYMAN
1500/591
222/170
842/144

⑭
8.568 AC
⑭A
8.568 AC
⑭B
8.568 AC
⑭C
8.568 AC
⑭D
8.568 AC
⑭E
8.568 AC
⑭F
8.568 AC
⑭G
8.568 AC
⑭H
8.568 AC
⑭I
8.568 AC
⑭J
8.568 AC
⑭K
8.568 AC
⑭L
8.568 AC
⑭M
8.568 AC
⑭N
8.568 AC
⑭O
8.568 AC
⑭P
8.568 AC
⑭Q
8.568 AC
⑭R
8.568 AC
⑭S
8.568 AC
⑭T
8.568 AC
⑭U
8.568 AC
⑭V
8.568 AC
⑭W
8.568 AC
⑭X
8.568 AC
⑭Y
8.568 AC
⑭Z
8.568 AC
⑮
3.994 AC
⑯
2.601 AC
⑰
2.601 AC
⑱
2.601 AC
⑲A
2.601 AC
⑲B
2.601 AC
⑲C
2.601 AC
⑲D
2.601 AC
⑲E
2.601 AC
⑲F
2.601 AC
⑲G
2.601 AC
⑲H
2.601 AC
⑲I
2.601 AC
⑲J
2.601 AC
⑲K
2.601 AC
⑲L
2.601 AC
⑲M
2.601 AC
⑲N
2.601 AC
⑲O
2.601 AC
⑲P
2.601 AC
⑲Q
2.601 AC
⑲R
2.601 AC
⑲S
2.601 AC
⑲T
2.601 AC
⑲U
2.601 AC
⑲V
2.601 AC
⑲W
2.601 AC
⑲X
2.601 AC
⑲Y
2.601 AC
⑲Z
2.601 AC
⑳
2.179 AC
㉑
1.652 AC
㉒
.826
㉓
.826
㉔
.826
㉕
.826
㉖
.826
㉗
.826
㉘
.826
㉙
.826
㉚
.826
㉛
.826
㉜
.826
㉝
.826
㉞
.826
㉟
.826
㊱
.826
㊲
.826
㊳
.826
㊴
.826
㊵
.826
㊶
.826
㊷
.826
㊸
.826
㊹
.826
㊺
.826
㊻
.826
㊼
.826
㊽
.826
㊾
.826
㊿
.826