

Overview



Legend

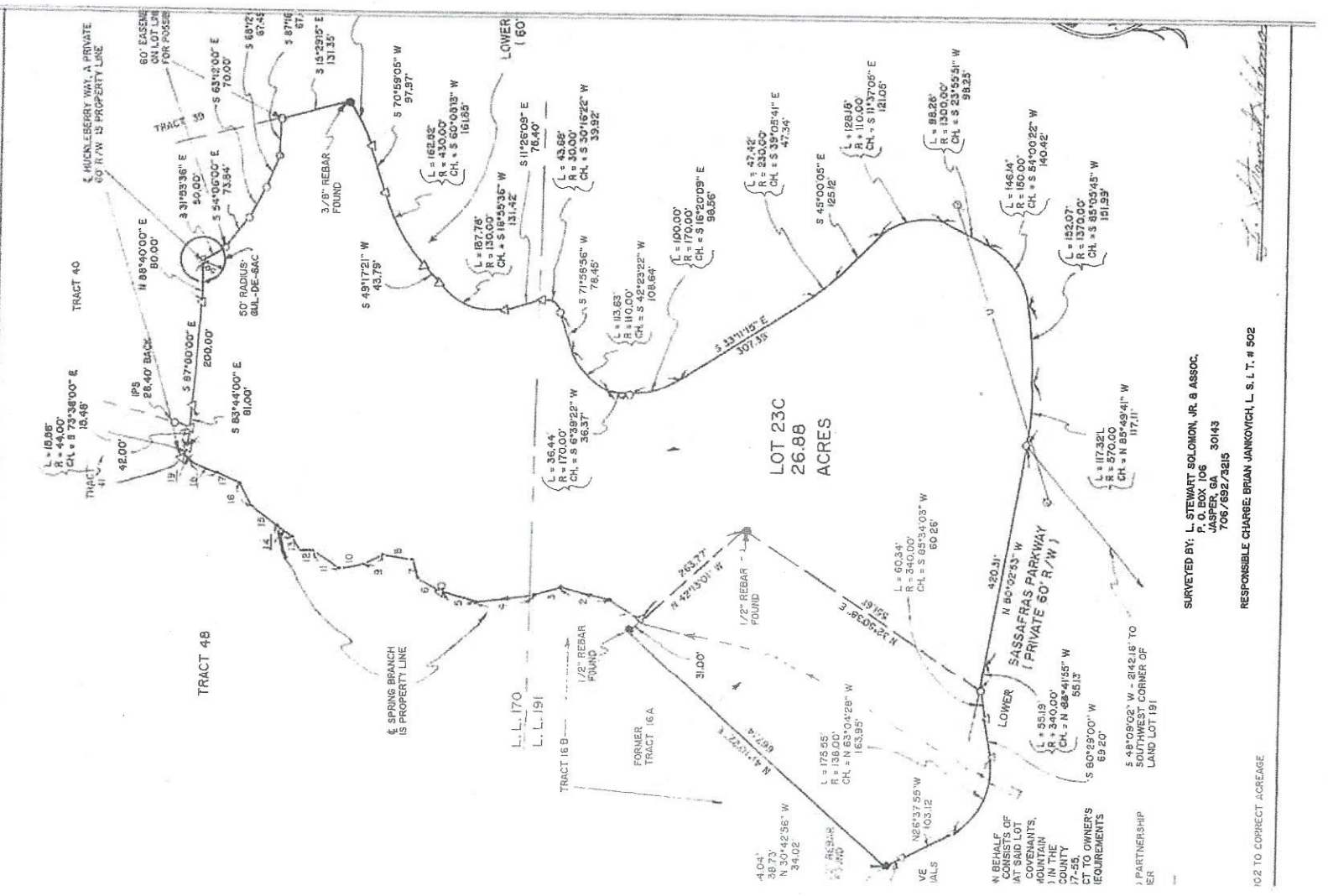
- Parcels
- Roads

Parcel ID	012 075 049	Owner	SHLANTA PAUL R & MARY E LONG	Last 2 Sales			
Class Code	Residential		4765 MERLEDALE DR	Date	3/29/2002	Price	0
Taxing District	UNINCORPORATED		ATLANTA GA 30327		3/29/2002		0
	UNINCORPORATED	Physical Address	HUCKLEBERRY WAY				QC
Acres	26.88	Assessed Value	Value \$215000				LM
							Q

(Note: Not to be used on legal documents)

Date created: 11/19/2018
 Last Data Uploaded: 11/19/2018 12:45:14 PM

Developed by  **Schneider**
 GEOSPATIAL



LOT 23C
26.88
ACRES

SURVEYED BY: L. STEWART SOLOMON, JR. & ASSOC.
 106
 JASPER, GA 30433
 706/692/3215

RESPONSIBLE CHARGE: BRIAN JANKOVICH, L. S. I. T. # 502

1/2 TO CORRECT ACREAGE

N BEHALF OF
 AT SAID LOT
 COVENANTS,
 1 IN THE
 COUNTY
 17-55,
 CT TO OWNERS
 REQUIREMENTS

1 PARTNERSHIP
 ER

S 48°09'02" W - 2142.18' TO
 SOUTHWEST CORNER OF
 LAND LOT 191

420.31'
 N 80°02'33" W
 SASSAFRAS PARKWAY
 (PRIVATE 60' R/W)

L = 60.34'
 R = 340.00'
 CH = S 05°34'03" W
 60.26'

L = 175.55'
 R = 138.00'
 CH = N 63°04'28" W
 163.95'

L = 126.3755' W
 103.12'

4.04'
 36.73'
 N 30°42'56" W
 34.02'

1/2" REBAR FOUND

1/2" REBAR FOUND

31.00'

763.77'

N 41°02'27" E
 667.14'

FORMER TRACT 16A

TRACT 16 B D
 L. L. 170
 L. L. 191

3/8" REBAR FOUND

TRACT 40

TRACT 48

1/2" REBAR FOUND

L = 117.321'
 R = 570.00'
 CH = N 85°49'41" W
 117.11'

L = 152.07'
 R = 132.00'
 CH = S 85°00'45" W
 151.59'

L = 146.14'
 R = 180.00'
 CH = S 54°00'22" W
 140.42'

L = 88.24'
 R = 130.00'
 CH = S 23°55'51" W
 98.25'

L = 47.42'
 R = 230.00'
 CH = S 35°05'41" E
 47.34'

L = 128.16'
 R = 110.00'
 CH = S 11°37'05" E
 121.05'

L = 160.00'
 R = 170.00'
 CH = S 16°20'09" E
 98.56'

L = 113.63'
 R = 110.00'
 CH = S 42°23'22" W
 106.64'

L = 43.88'
 R = 300.00'
 CH = S 30°15'22" W
 39.92'

L = 167.76'
 R = 187.4535' W
 CH = S 18°45'35" W
 161.65'

L = 162.92'
 R = 430.00'
 CH = S 60°08'13" W
 161.65'

L = 162.92'
 R = 430.00'
 CH = S 60°08'13" W
 161.65'

L = 162.92'
 R = 430.00'
 CH = S 60°08'13" W
 161.65'

L = 162.92'
 R = 430.00'
 CH = S 60°08'13" W
 161.65'

L = 162.92'
 R = 430.00'
 CH = S 60°08'13" W
 161.65'

L = 162.92'
 R = 430.00'
 CH = S 60°08'13" W
 161.65'

L = 162.92'
 R = 430.00'
 CH = S 60°08'13" W
 161.65'

L = 162.92'
 R = 430.00'
 CH = S 60°08'13" W
 161.65'

BYERS WELL DRILLING, INC.

BOX 580

BLAIRSVILLE, GA 30512

(404) 745-2166

License# 290

Town Elizaj Date 3-30-95

Location _____ County Gilmer

Owner Paul Shlaina

Address _____

Use of Well Household Topography _____

Depth of Casings 46' Bore Total Depth 425'

Type of Soil Clay Type of Rock Granite

Gallons Per Minute 4 Water Level _____

Sterilization None

Amount Per Feet * 7.00

Total * 2975.00