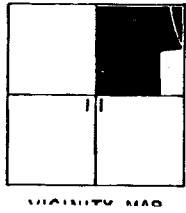
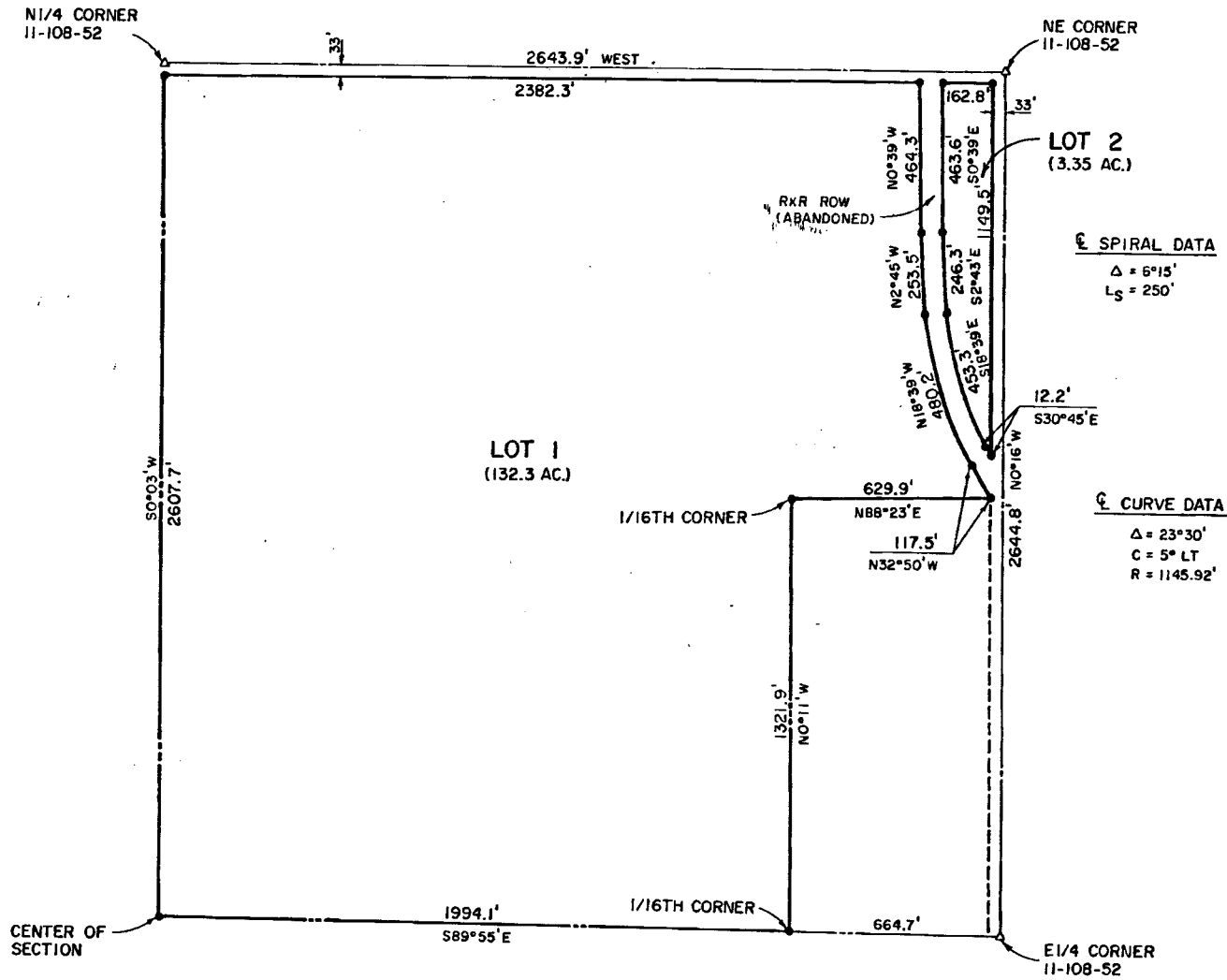


PLAT  
OF  
DEWITT'S RESERVE ADDITION  
IN THE  
NORTHEAST QUARTER, SECTION 11, T108N, R52W, 5TH P.M.  
LAKE COUNTY, SOUTH DAKOTA



**LEGEND**  
 — TRACT BOUNDARY  
 ● MARKER SET



SCALE 1" = 300'