

1.01 Acres Lee County Alabama

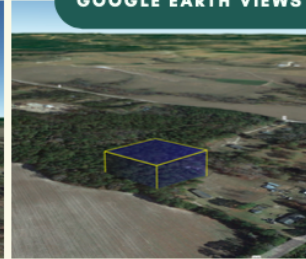
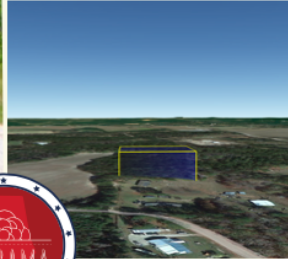
**UNRESTRICTED! MOBILE
HOMES, RV'S AND
SINGLE FAMILY HOMES
OK! NO HOA!**

Easy living awaits you on this gorgeous 1.01-acre property in Lee County, Alabama. This property is located in a prime location in Lee Road 30, just 23 minutes south of downtown Opelika. It is also close to Auburn. Unrestricted! Mobile Homes, RV's and Single Family Homes Ok! No HOA!

**NEAREST STREET VIEW AT
CO RD 29: 0.2 MILES AWAY**



GOOGLE EARTH VIEWS



Property Details



Parcel #: 21-05-15-0-000-002.000
Property Address: Lee Road 30, Opelika, AL 36804
County: Lee County
State: Alabama
Parcel Size: 1.01 acres
Terrain Type: Wooded
Zoning: Residential
Access To Property: Lee Road 30
GPS Center Coordinates: 32.466000, -85.423400
Annual Tax: \$66.42
Google map link:
<https://goo.gl/maps/Z22hZMtrqtmJKNYc7>



**NEAREST STREET VIEW AT
CO RD 29: 0.2 MILES AWAY**



County Contact Info

County Assessor: (334) 737-3640
County Treasurer: (334) 737-3655
County Recorder: (334) 745-9761

info@pgilandgroup.com

Distances & Attractions



Donald E. Davis Arboretum: 14.3 miles away



Chewacla State Park: 13 miles away

The area offers a variety of outdoor recreational opportunities, including several parks, hiking trails, and golf courses. The city also has a thriving arts and culture scene, with several theaters and museums.



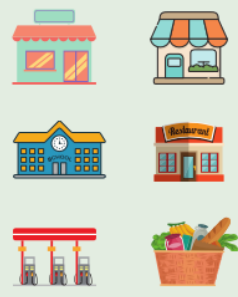
23 min to Downtown Opelika

Attractions

Major Establishments



- 10-14 miles away
- Walmart Supercenter
- Lowe's Home Improvement
- Auburn University
- The Home Depot
- Auburn University Regional Airport
- Jordan-Hare Stadium
- Wells Fargo Bank
- East Alabama Medical Ctr



Tuskegee National Forest: 14 miles away



Town Creek Park: 13 miles away



Moore's Mill Club: 12 miles away



Spring Villa Park: 14.2 miles away