

ACCURACY CERTIFICATE

I hereby certify that the survey shown hereon was made under my direct supervision. The unadjusted ratio of closure was 1":20,745". This survey was a closed loop survey and was not adjusted. This survey represents a boundary survey and complies with 201 KAR 18:150

GREGORY A. WEST LPLS #3802

DATE

OWNERSHIP CERTIFICATE

I (we) do hereby certify that I (we) are the owners of the property shown and described hereon and do hereby adopt this survey with my (our) free consent.

CCL MARKETING CORP

DATE

UTILITY NOTE

All utilities shown hereon were observed through the normal course of surveying. All utilities should be field verified prior to any construction. This property may be subject to utilities not shown or depicted hereon.

Most utility companies participate in the Kentucky "BUD" (Before You Dig) program. Contact information: 811

Table with 3 columns: NUMBER, DIRECTION, DISTANCE. Lists survey points L1 through L44 with their respective bearings and distances.

Table with 3 columns: NUMBER, DIRECTION, DISTANCE. Lists survey points L45 through L83 with their respective bearings and distances.

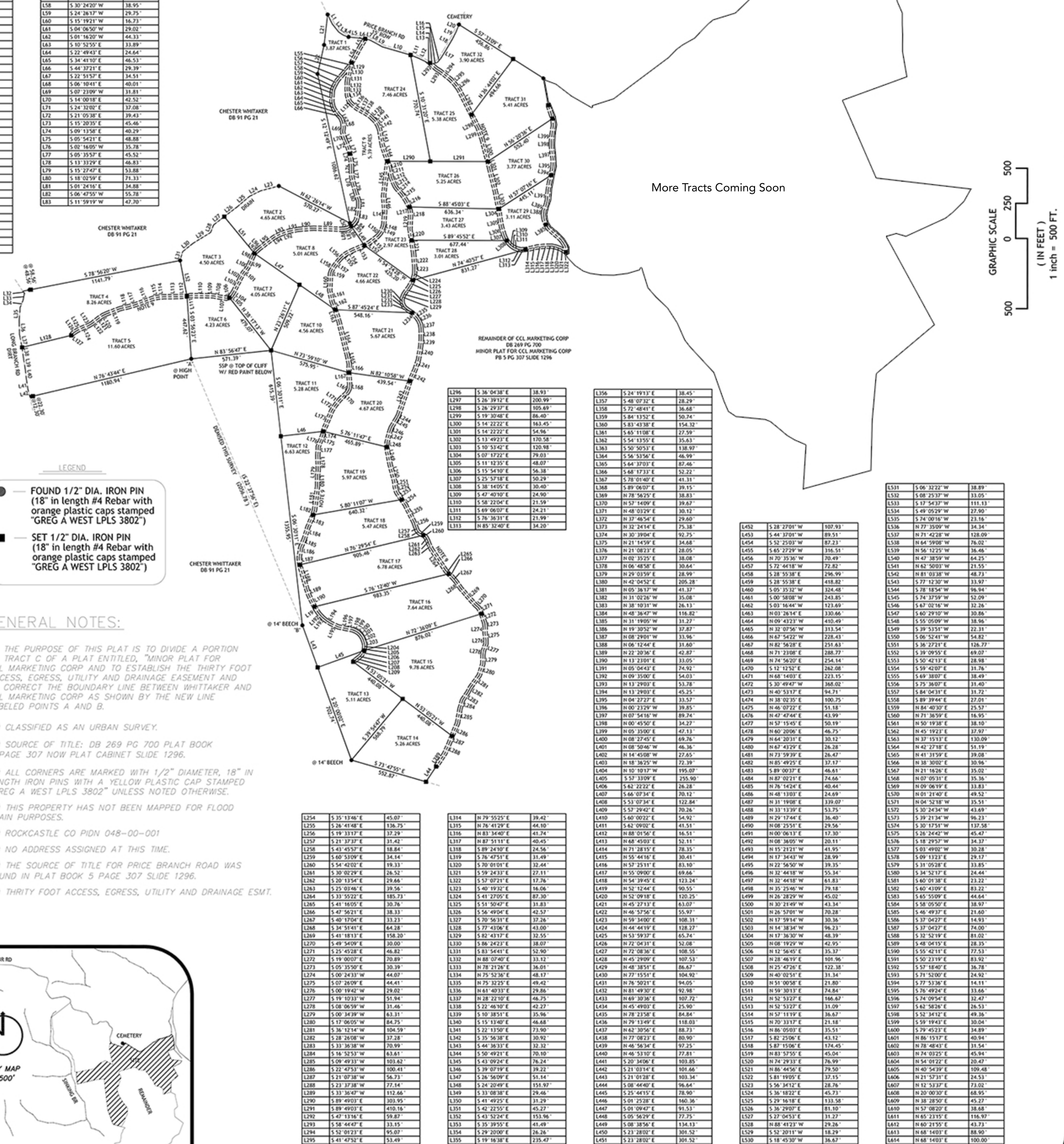
Table with 3 columns: NUMBER, DIRECTION, DISTANCE. Lists survey points L84 through L110 with their respective bearings and distances.

Table with 3 columns: NUMBER, DIRECTION, DISTANCE. Lists survey points L111 through L147 with their respective bearings and distances.

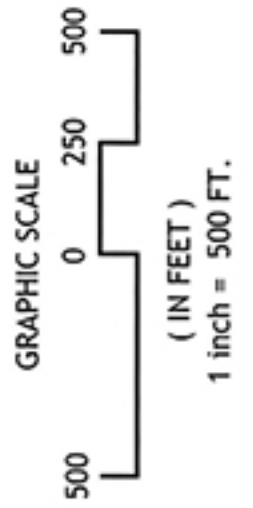
Table with 3 columns: NUMBER, DIRECTION, DISTANCE. Lists survey points L148 through L174 with their respective bearings and distances.

Table with 3 columns: NUMBER, DIRECTION, DISTANCE. Lists survey points L175 through L211 with their respective bearings and distances.

Table with 3 columns: NUMBER, DIRECTION, DISTANCE. Lists survey points L212 through L250 with their respective bearings and distances.



More Tracts Coming Soon



- Legend items: FOUND 1/2" DIA. IRON PIN (18" in length #4 Rebar with orange plastic caps stamped "GREG A WEST LPLS 3802") and SET 1/2" DIA. IRON PIN (18" in length #4 Rebar with orange plastic caps stamped "GREG A WEST LPLS 3802")

GENERAL NOTES:

- 1.) THE PURPOSE OF THIS PLAT IS TO DIVIDE A PORTION OF TRACT C OF A PLAT ENTITLED, "MINOR PLAT FOR CCL MARKETING CORP AND TO ESTABLISH THE THIRTY FOOT ACCESS, EGRESS, UTILITY AND DRAINAGE EASEMENT AND TO CORRECT THE BOUNDARY LINE BETWEEN WHITTAKER AND CCL MARKETING CORP AS SHOWN BY THE NEW LINE LABELED POINTS A AND B.
- 2.) CLASSIFIED AS AN URBAN SURVEY.
- 3.) SOURCE OF TITLE: DB 269 PG 700 PLAT BOOK 5 PAGE 307 NOW PLAT CABINET SLIDE 1296.
- 4.) ALL CORNERS ARE MARKED WITH 1/2" DIAMETER, 18" IN LENGTH IRON PINS WITH A YELLOW PLASTIC CAP STAMPED "GREG A WEST LPLS 3802" UNLESS NOTED OTHERWISE.
- 5.) THIS PROPERTY HAS NOT BEEN MAPPED FOR FLOOD PLAIN PURPOSES.
- 6.) ROCKCASTLE CO PIDN 048-00-001
- 7.) NO ADDRESS ASSIGNED AT THIS TIME.
- 8.) THE SOURCE OF TITLE FOR PRICE BRANCH ROAD WAS FOUND IN PLAT BOOK 5 PAGE 307 SLIDE 1296.
- 9.) THIRTY FOOT ACCESS, EGRESS, UTILITY AND DRAINAGE ESMT.

Table with 3 columns: NUMBER, DIRECTION, DISTANCE. Lists survey points L251 through L287 with their respective bearings and distances.

Table with 3 columns: NUMBER, DIRECTION, DISTANCE. Lists survey points L288 through L324 with their respective bearings and distances.

Table with 3 columns: NUMBER, DIRECTION, DISTANCE. Lists survey points L296 through L332 with their respective bearings and distances.

Table with 3 columns: NUMBER, DIRECTION, DISTANCE. Lists survey points L333 through L369 with their respective bearings and distances.

Table with 3 columns: NUMBER, DIRECTION, DISTANCE. Lists survey points L370 through L406 with their respective bearings and distances.

Table with 3 columns: NUMBER, DIRECTION, DISTANCE. Lists survey points L407 through L443 with their respective bearings and distances.

Table with 3 columns: NUMBER, DIRECTION, DISTANCE. Lists survey points L444 through L480 with their respective bearings and distances.

Table with 3 columns: NUMBER, DIRECTION, DISTANCE. Lists survey points L481 through L517 with their respective bearings and distances.

Table with 3 columns: NUMBER, DIRECTION, DISTANCE. Lists survey points L518 through L554 with their respective bearings and distances.

WEST LAND SURVEYING, INC. MONTICELLO, KY 42633. Includes contact information, scale (1" = 500'), and project name: MINOR PLAT FOR CCL MARKETING CORP.