



ACREAGE FOR SALE



9.4 ± ACRES

ANTELOPE
COUNTY,
NEBRASKA

OFFERED AT:
\$179,900.00

Property Address: 83543 516th Avenue, Elgin, Nebraska



Property Taxes - \$333.42


Legal Description - Tract in
Southeast 1/4 Section 25, Township
23 North, Range 8 West


All mineral rights owned by seller, if
any, to convey to buyer.

This is a rare opportunity to purchase a 9.4 +/- acre property. The acreage includes a septic system, water well, buildings, corrals, shooting ranges, grass, and a well-established shelterbelt. Positioned just half a mile off a paved road, this acreage offers amazing views and privacy. Ideal for those seeking a picturesque country lifestyle, this property could be the perfect homesite. Don't wait, call Ted Baum today to view this property!

Ted Baum

Farm & Ranch Specialist

 Elgin, Nebraska

 (402) 843-8370

 Ted.Baum@AgWestLand.com



*Listing agent related to seller

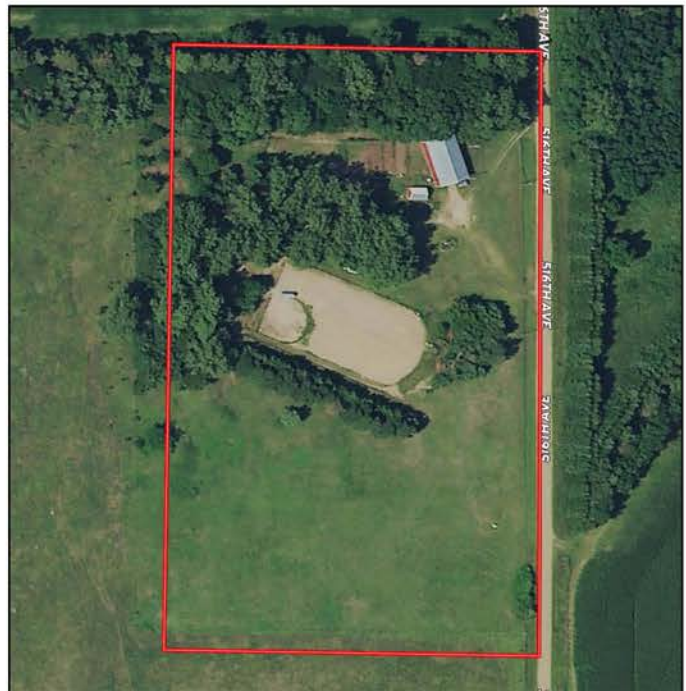


Property Directions
 From Elgin, travel south on Highway 14 for 3 miles. Head west on 836th Road for 5 miles. Travel south on 516th Avenue for a 1/2 mile. The property will be on the west side of 516th Avenue.



Additional Property Details

- Septic system and water well
- 2 shooting ranges
- 14' x 20' shop
- 64' x 40' building with partial living quarters
- Living quarters include: two rooms, shower, toilet, heater, window air conditioner, and washer/dryer
- Hunting opportunities for whitetail, mule deer, turkey, and bobcat that frequent the property



The information contained herein is as obtained by AgWest Land Brokers LLC—Holdrege, NE from the owner and other sources. Even though this information is considered reliable, neither broker nor owner make any guarantee, warranty or representation as to the correctness of any data or descriptions. The accuracy of such statements should be determined through independent investigation made by the prospective purchaser. This offer for sale is subject to prior sale, errors and omissions, change of price, terms or other conditions or withdrawal from sale in whole or in part, by seller without notice and at the sole discretion of seller. Readers are urged to form their own independent conclusions and evaluations in consultation with legal counsel, accountants, and/or investment advisors concerning any and all material contained herein. Maps are for illustrative purposes only and are not intended to represent actual property lines.