



0.58 Acres El Dorado County California



Easy living awaits you on this 0.58-acre raw land in El Dorado County, California. This property is located in Sierra Springs Subdivision, just 7 minutes away from Jenkinson Lake. The area offers easy living away from the hustle and bustle of the city where you can go hike, fish, and do other outdoor activities near Eldorado National Forest.



Nearest Street View at Co Rd E16: 1.0 miles away

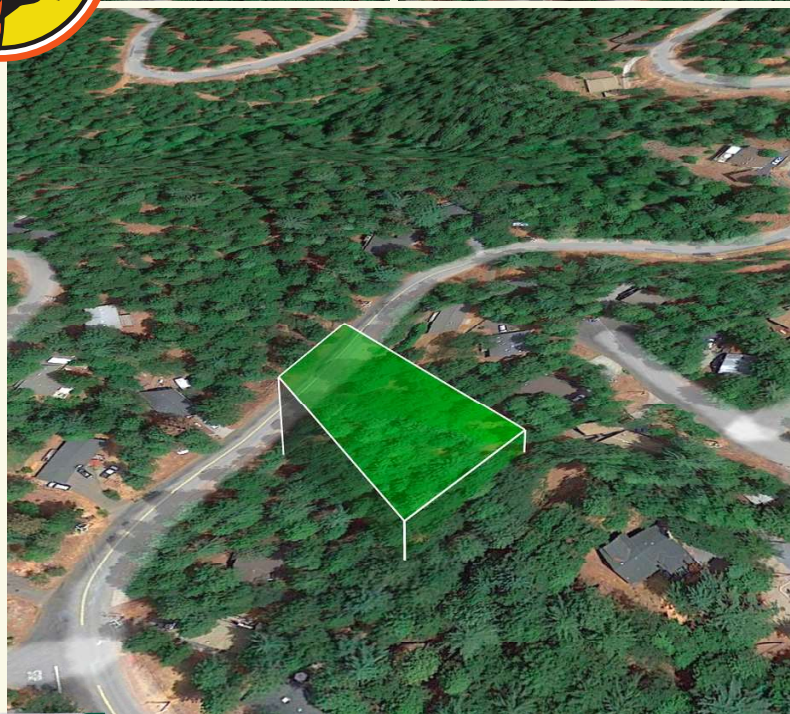


Google Earth Views



Property Details

Parcel #: 077-243-016-000
Property Address: 5525 Sierra Springs Dr, Pollock Pines, CA, 95726
County: El Dorado County
State: California
Parcel Size: 0.58 acres
Land Use: Residential Lot
Property Type: Vacant
GPS Center Coordinates: 38.708600, -120.610700
Tax Amount: \$233.88
Google map link: <https://goo.gl/maps/DyK8hFP29Esyx8cz9>



Nearest Street View at Co Rd E16: 1.0 miles away



County Contact Info

County Assessor: (530) 621-5719
County Treasurer: (530) 621-5800
County Clerk and Recorder: (530) 621-5490



Distances & Attractions

El Dorado County, California

Eldorado National Forest: 29.4 miles away

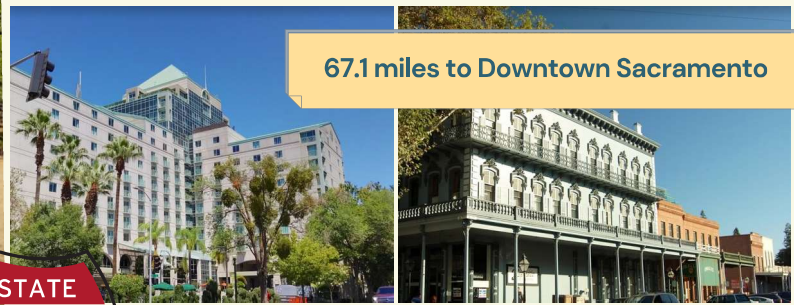


Sly Park Recreation Area: 3.3 miles away



Centerville is known for its beautiful scenery and outdoor recreational activities. There are several parks and hiking trails in the area, including the Parrish Creek Trail, which offers stunning views of the surrounding mountains and valleys.

67.1 miles to Downtown Sacramento



Camping, hiking, boating, fishing & horseback riding in this scenic park with historic Mormon sites.



Attractions

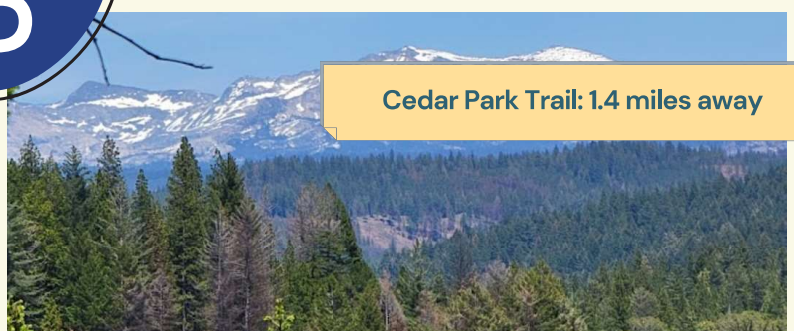
Major Establishments

5-7 miles away

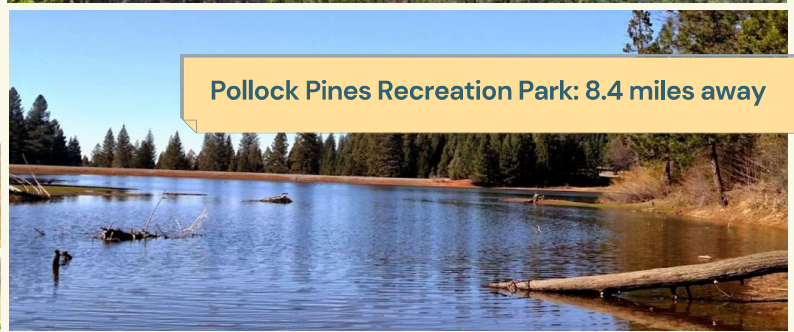
- Safeway
- CVS
- Pizza Factory
- Liquor & Mart
- Solid Ground Brewing
- Target
- The Home Depot
- Walmart



Cedar Park Trail: 1.4 miles away



Pollock Pines Recreation Park: 8.4 miles away



Bridal Veil Falls: 37.7 miles away



Map Overview

