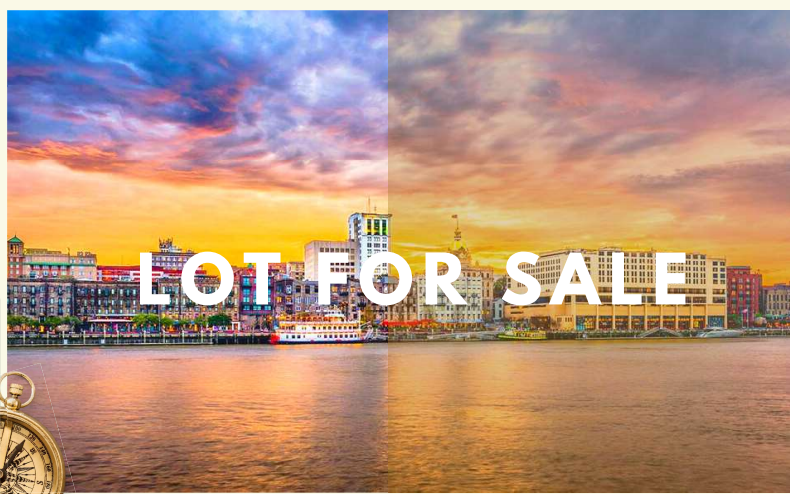




6.15 Acres Gwinnett County Georgia

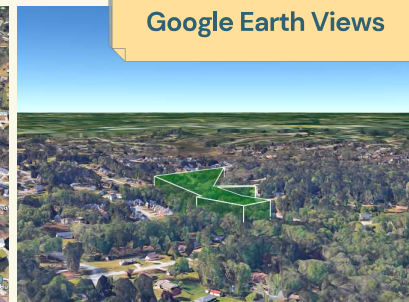


Check out this gorgeous 6.15-acre residential lot perfect for builders in Gwinnett County, Georgia. This property is located on Suwanee Pkwy in Lawrenceville. The area is just minutes of walking from major establishments such as Kroger, Walgreens, Planet Fitness, and more.

Property Street View at Suwanee Pkwy NW



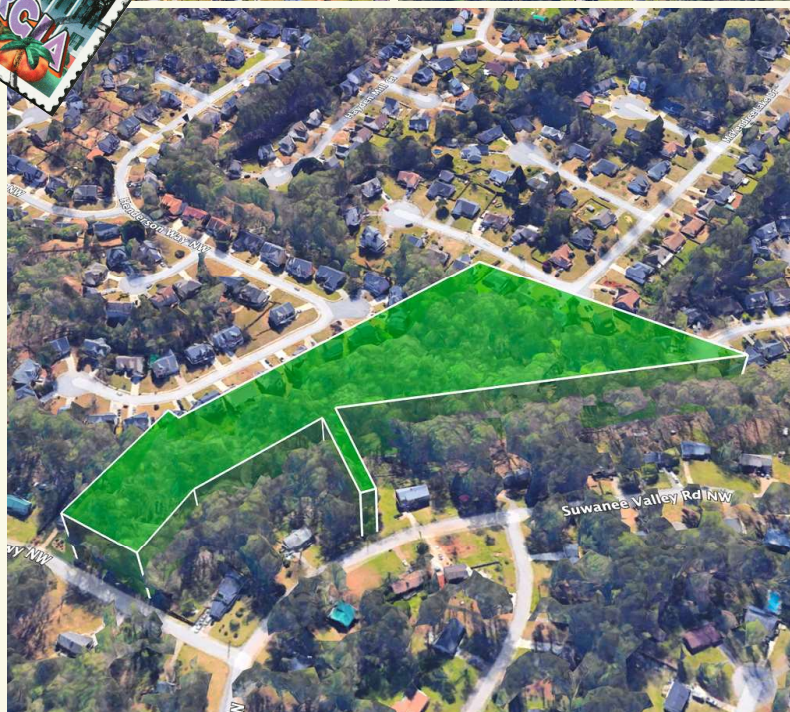
Google Earth Views



Property Details



Parcel #: R7085 008
Property Address: Suwanee Pkwy, Lawrenceville, GA 30043
Subdivision: PARKWAY
County: Gwinnett County
State: Georgia
Parcel Size: 6.15 acres
Land Use: RESIDENTIAL VACANT
Property Type: Vacant
GPS Center Coordinates: 33.992300, -84.040400
Tax Amount: \$796
Google map link: <https://goo.gl/maps/NjPkaWSAvQq6qKGr5>



Property Street View at Suwanee Pkwy NW



County Contact Info

County Assessor: (770) 822-7200
County Treasurer: (770) 822-8800
County Clerk and Recorder: (770) 822-8100



Distances & Attractions

Gwinnett County, Georgia



Fort Yargo State Park: 20.3 miles away

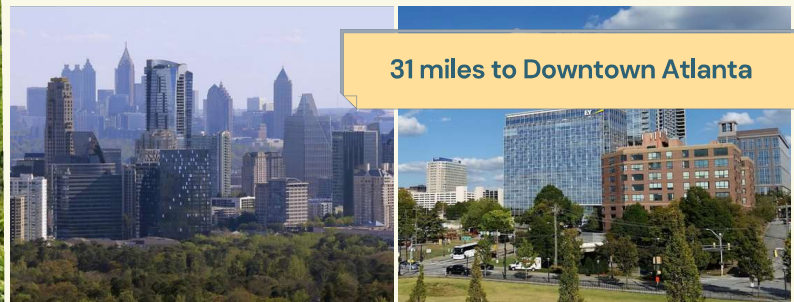


Tribble Mill Park: 12.7 miles away



There are many attractions that await you here. Lawrenceville is considered one of the best places to live in Georgia and is known for its suburban feel and many parks. The public schools in Lawrenceville are highly rated. Lawrenceville is home to performing arts, great dining, and unique shops.

31 miles to Downtown Atlanta



700-acre park featuring a lake for fishing & boating, plus horseback riding & biking trails.

Attractions

Major Establishments

1-5 miles away

- Walmart Supercenter
- Northside Hospital Gwinnett
- Gwinnett County Airport
- Georgia Gwinnett College
- The Home Depot
- Kroger
- Starbucks
- Costco Wholesale
- Central Gwinnett High School



Collins Hill Park: 3.5 miles away



Bear's Best Atlanta: 11.7 miles away



Lanier Park Beach: 15 miles away



Map Overview

