



10.08 Acres Gallatin County Montana



LOT FOR SALE

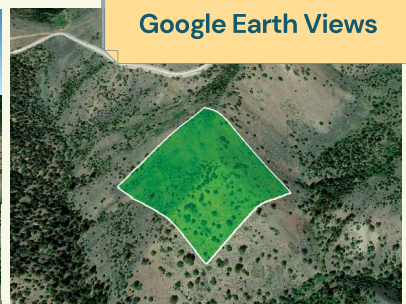
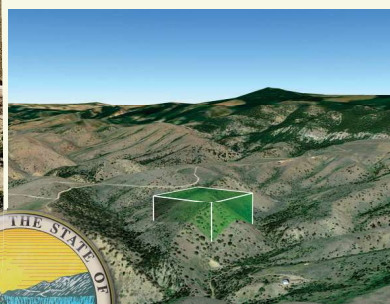


Moving to Montana? Check out this gorgeous 10.08-acre rural land in the Ponderosa Pines subdivision. This property is located on Lone Wolf Trail, just 43 minutes northeast of Three Forks. Moreover, the property is just 21 minute's drive from the Missouri River.

Ponderosa Pines



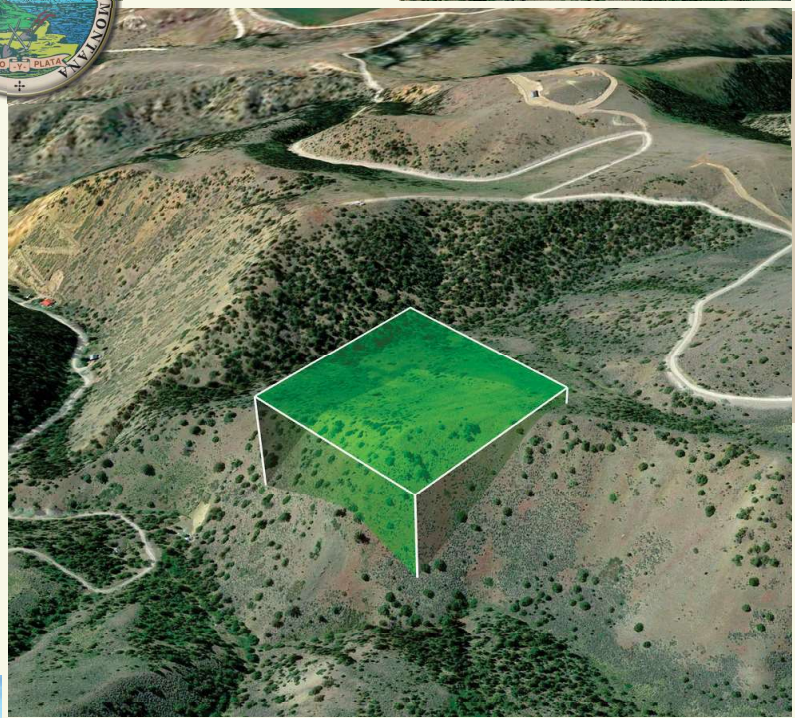
Google Earth Views



Property Details



Parcel #: 06-1209-14-2-01-03-0000
Property Address: Lone Wolf Trl,
Three Forks, MT 59752
Subdivision: PONDEROSA PINES
County: Gallatin County
State: Montana
Parcel Size: 10.08 acres
Land Use: VACANT LAND RURAL
Property Type:
RURAL/AGRICULTURAL-VACANT LAND
GPS Center Coordinates: 46.013800,
-111.324300
Tax Amount: \$520
Google map link:
<https://goo.gl/maps/HXnh3DgTEeWzmedf6>



Ponderosa Pines



County Contact Info

County Assessor: (406) 896-4000
County Treasurer: (406) 582-3030
County Clerk and Recorder: (406) 582-3050



Distances & Attractions

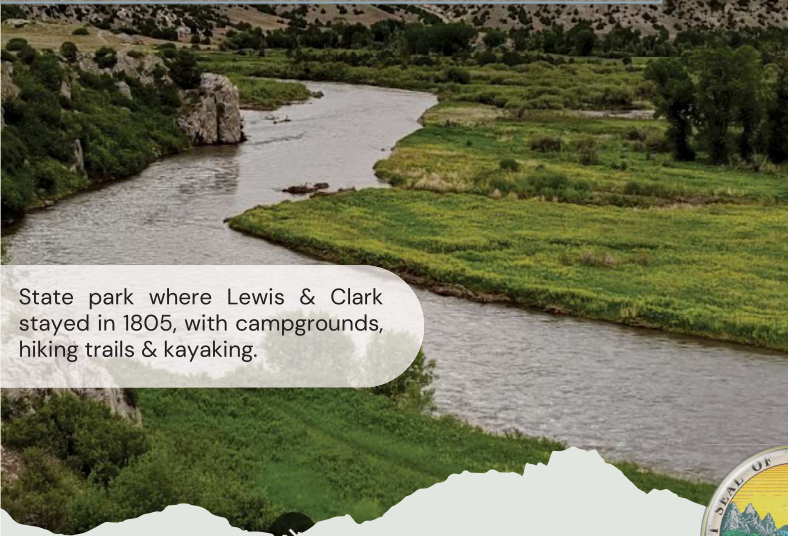
Gallatin County, Montana



Bozeman Yellowstone International Airport BZN: 36.4 miles away

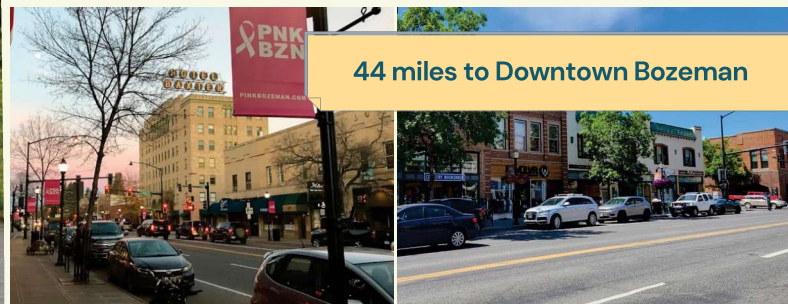


Missouri Headwaters State Park: 18.4 miles away



Ponderosa Pines Subdivision offers a country feel. It has easy access to I90 and is only an hour away from Bozeman Yellowstone International Airport. Drive up just an hour southeast and you will reach the nearest city of Belgrade. Belgrade is a town for all seasons offering unlimited opportunities for outdoor activities. Primarily a rural community that is heavy on agriculture, surrounded by wide open spaces.

44 miles to Downtown Bozeman



State park where Lewis & Clark stayed in 1805, with campgrounds, hiking trails & kayaking.

Major Establishments



20-30 miles away

- Albertsons
- Belgrade High School
- Iron Horse Cafe & Pie Shop
- Goodwill Store
- Conoco
- Madison River Brewing
- Bar 3 Bar-B-Q
- Belgrade Community Library
- JaMocha Junction



Fairweather Campground: 6.7 miles away



Madison Buffalo Jump State Park: 25.5 miles away



Cave Gulch Trail

Lewis & Clark Caverns State Park: 43.4 miles away



Map Overview

