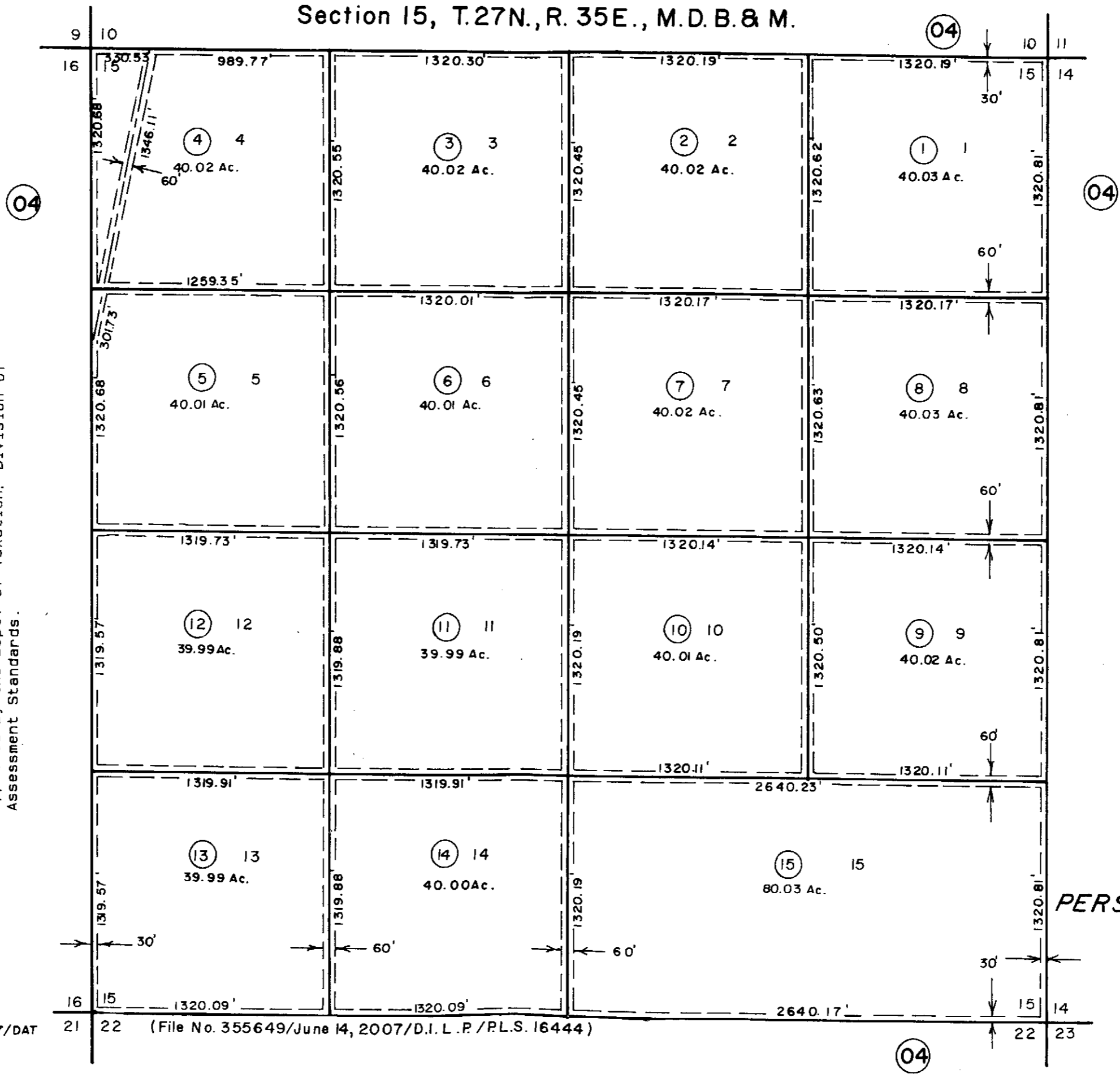


Section 15, T.27N., R. 35E., M.D.B. & M.



NOTE: This plat is for assessment use only and does not represent a survey. No liability is assumed as to the accuracy of the data delineated hereon. Use of this plat for other than assessment purposes is forbidden unless approved by the Dept. of Taxation, Division of Assessment Standards.

DMS/OCT 07/DAT

21 22 (File No. 355649/June 14, 2007/D.I.L.P./P.L.S. 16444)

PERSHING COUNTY